

Exhibit F

Fig. A. Proposed **Core** Subdistrict—current land uses



Fig. B. Proposed **Core** Subdistrict
– existing Future Land Use Map

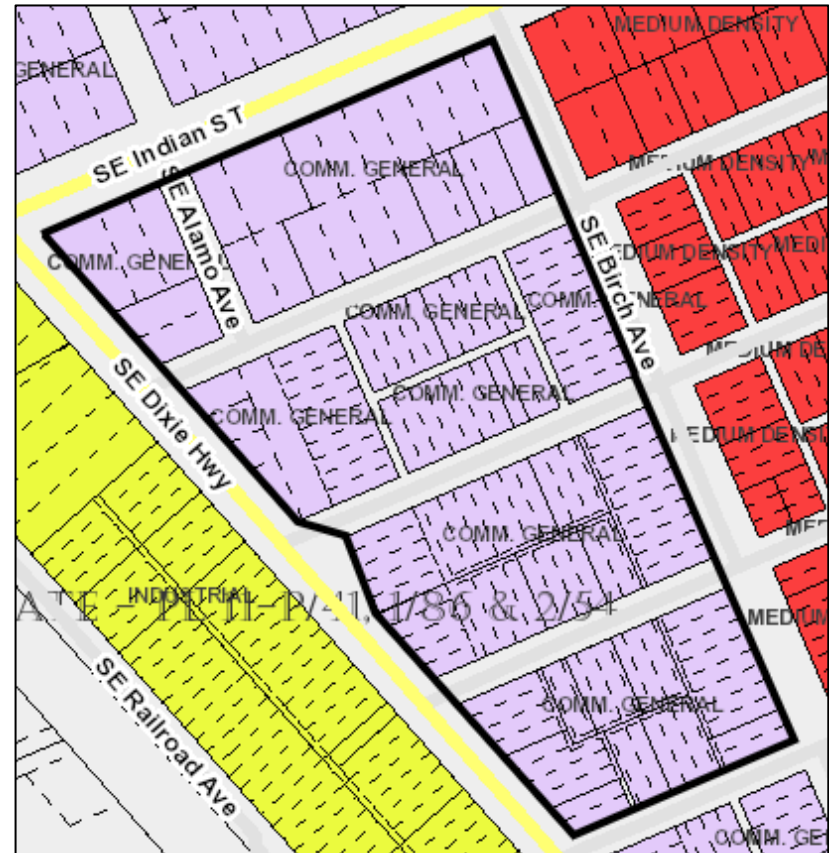


Fig. C. Proposed **Core** Subdistrict
– current Mixed-Use Future Land Use Overlay

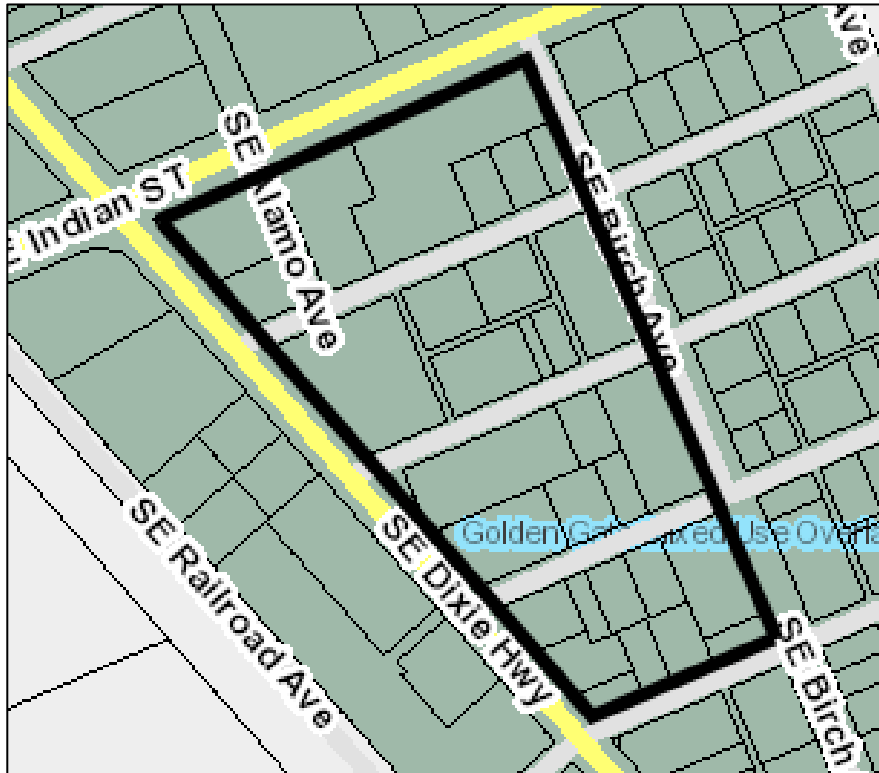
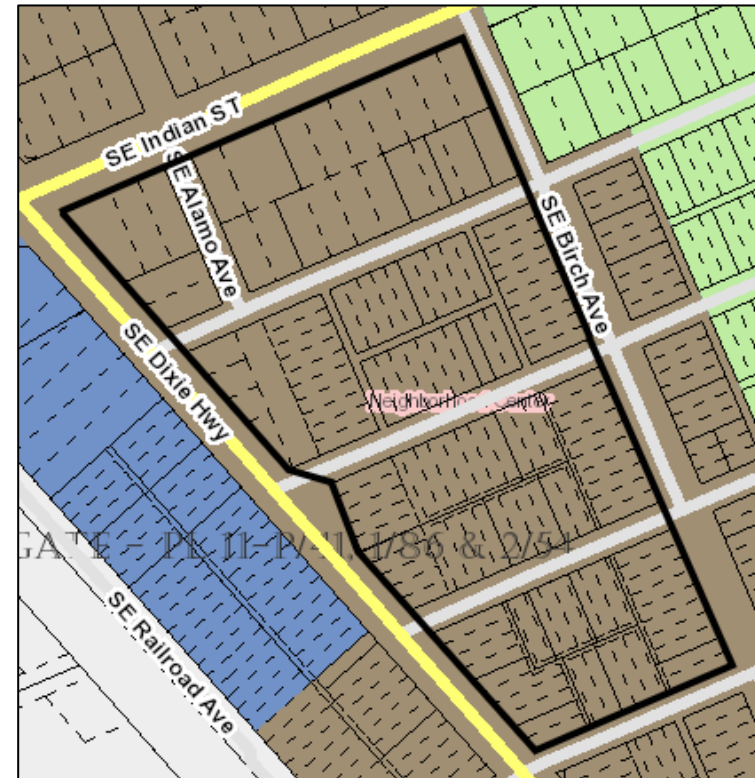


Fig. D. Proposed **Core** Subdistrict – current zoning overlays



SE Indian St

SE Alamo Ave

SE Birch Ave

SE Dixie Hwy

SE Railroad Ave

B-1

B-2

M-2

R-3B

R-35

Covenant #24 GC

GATE - PL II-P/41, 1/86 & 2/54

Fig. F1. Proposed **Corridor** Subdistrict (North)
- current land uses



Fig. F2. Proposed **Corridor** Subdistrict (South) - current land uses



Fig. G1. Proposed **Corridor** Subdistrict (North)
existing future land use map

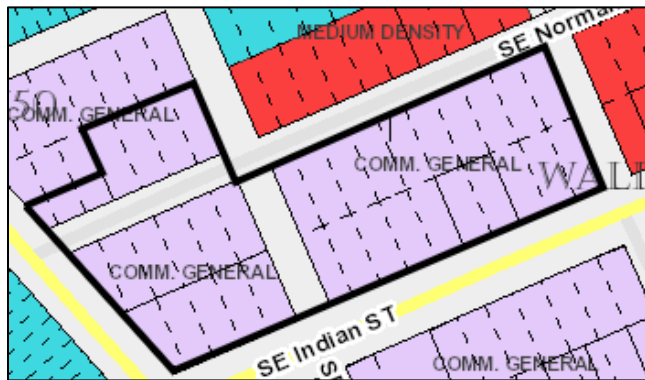


Fig. G2. Proposed **Corridor** Subdistrict (South)
existing future land use map

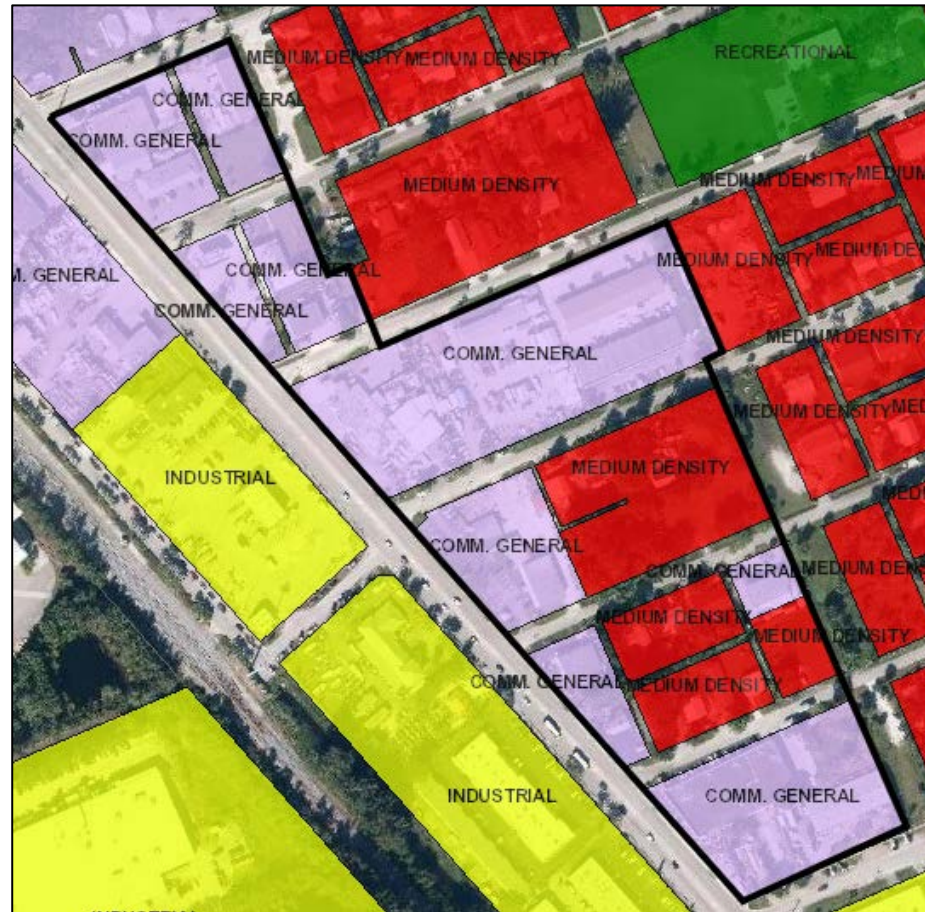


Fig. H1. Proposed **Corridor** Subdistrict (North)
existing Mixed-Use future land use overlay

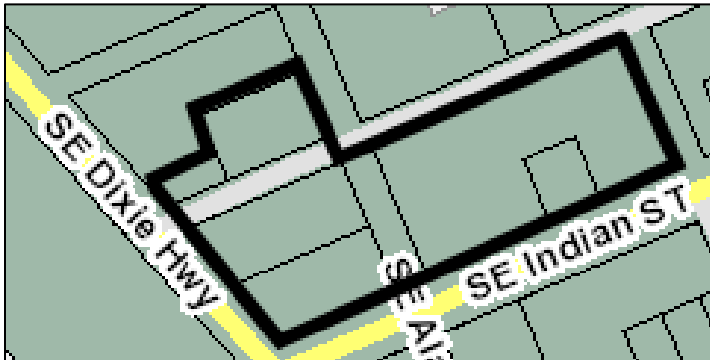


Fig. H2. Proposed **Corridor** Subdistrict (South)
existing Mixed-Use future land use overlay

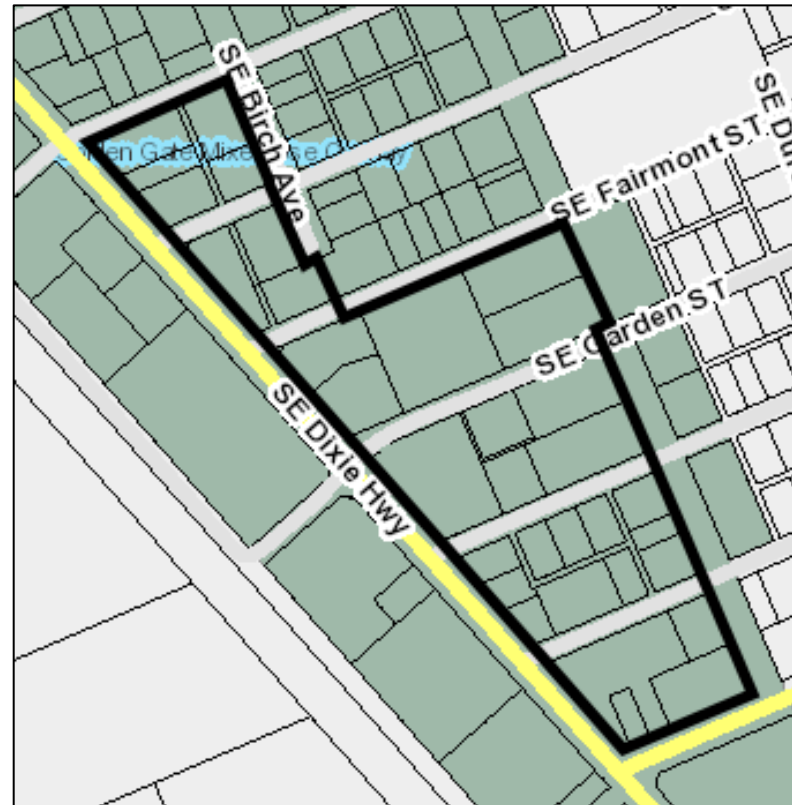


Fig. I1. Proposed **Corridor** Subdistricts (North)
existing zoning overlays

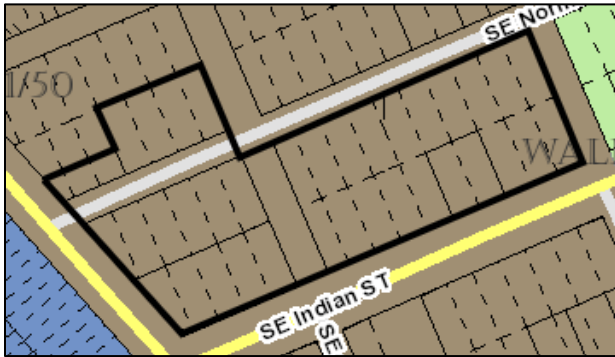


Fig. I2. Proposed **Corridor** Subdistricts (south)
existing zoning overlays

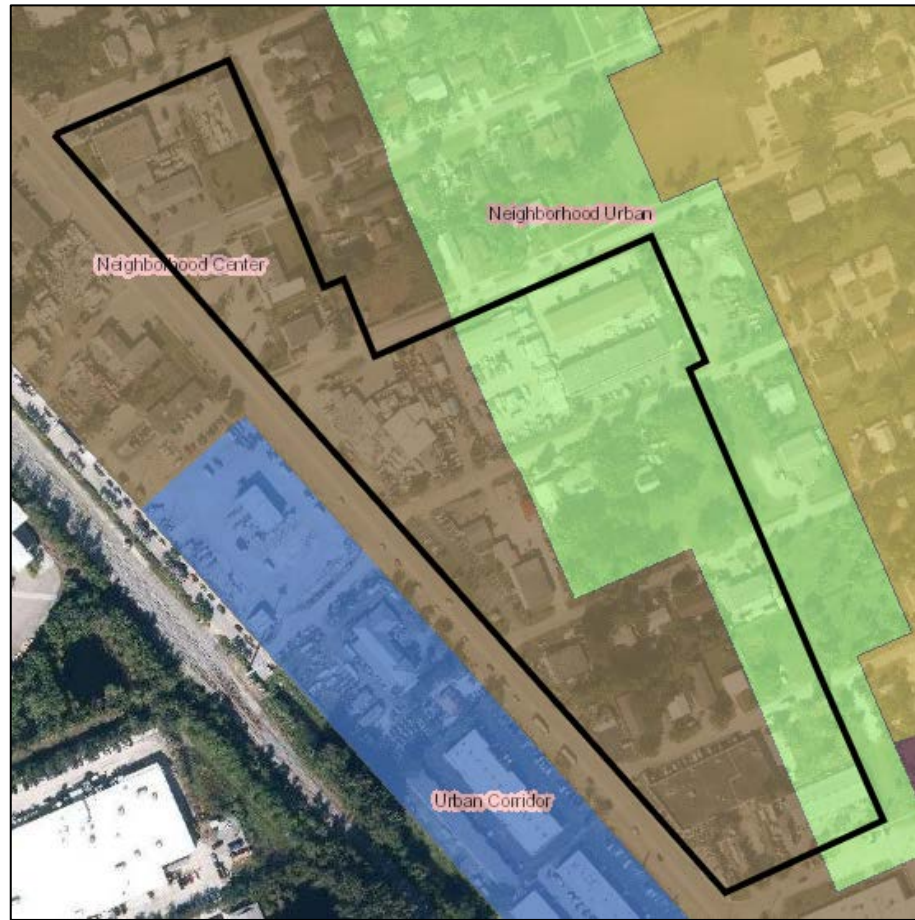


Fig. J1. Proposed **Corridor** Subdistrict (North)-
- underlying zoning districts

Fig. J1. Proposed **Corridor** Subdistrict (South)
underlying zoning districts

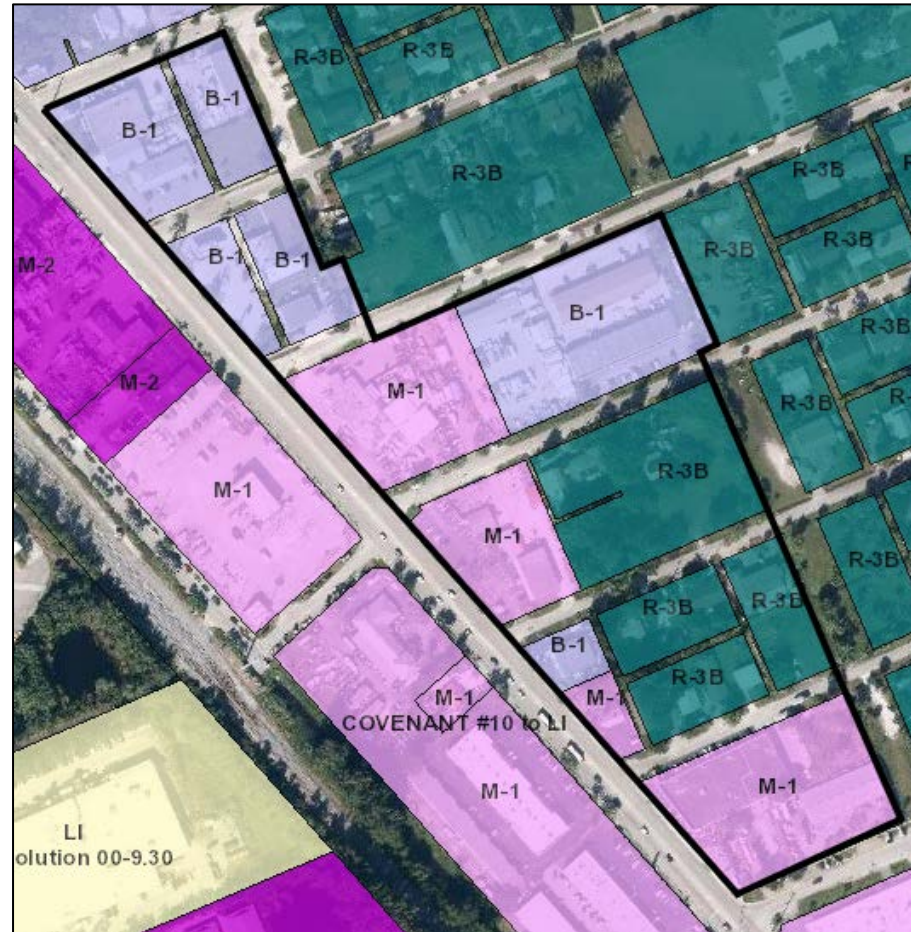
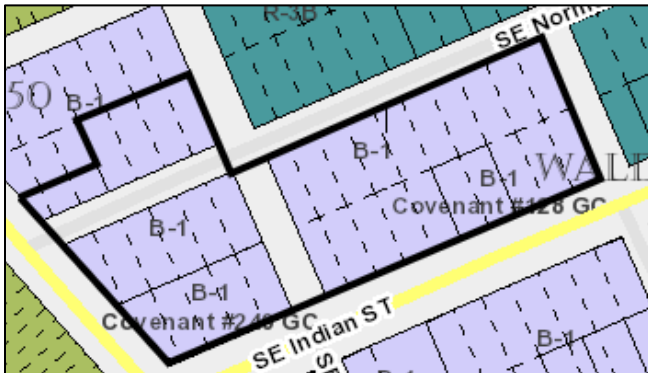


Fig. K. Proposed **General** Subdistrict
– existing Future Land Use Map



Fig. L. Proposed **General** Subdistrict
– existing land uses



Fig. M. Proposed **General** Subdistrict
– existing Mixed-Use Future Land Use Overlay

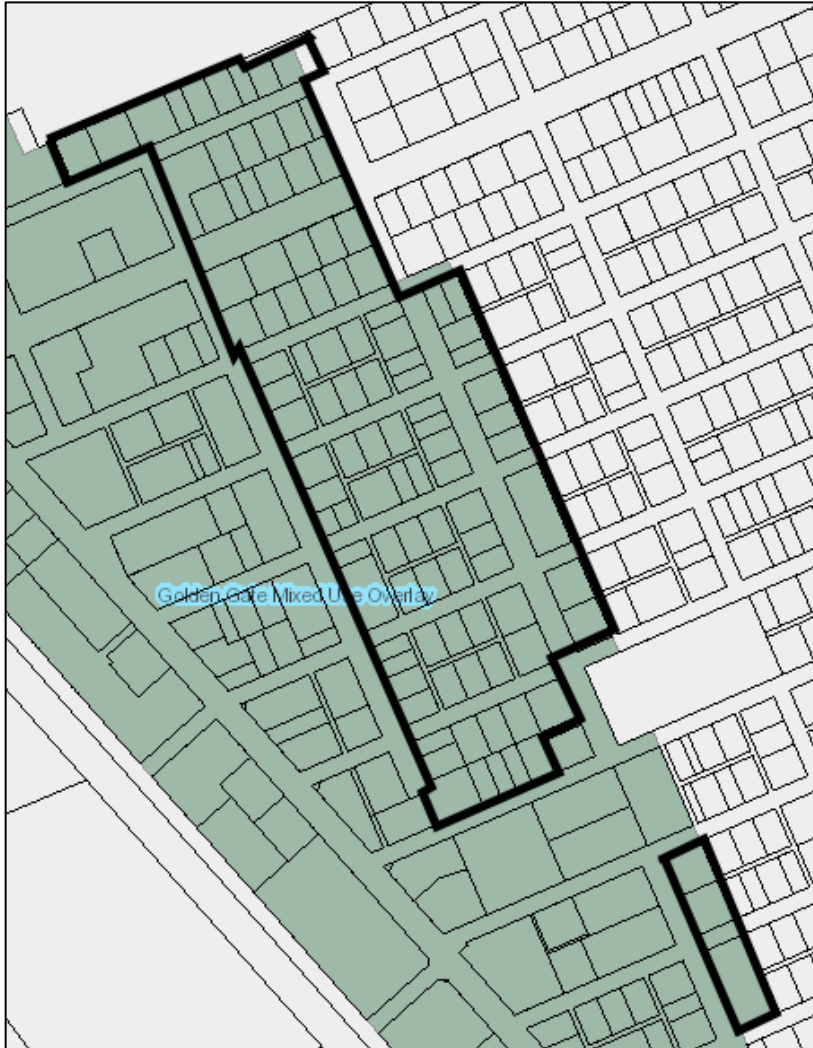


Fig. N. Proposed **General** Subdistrict
– existing zoning overlays

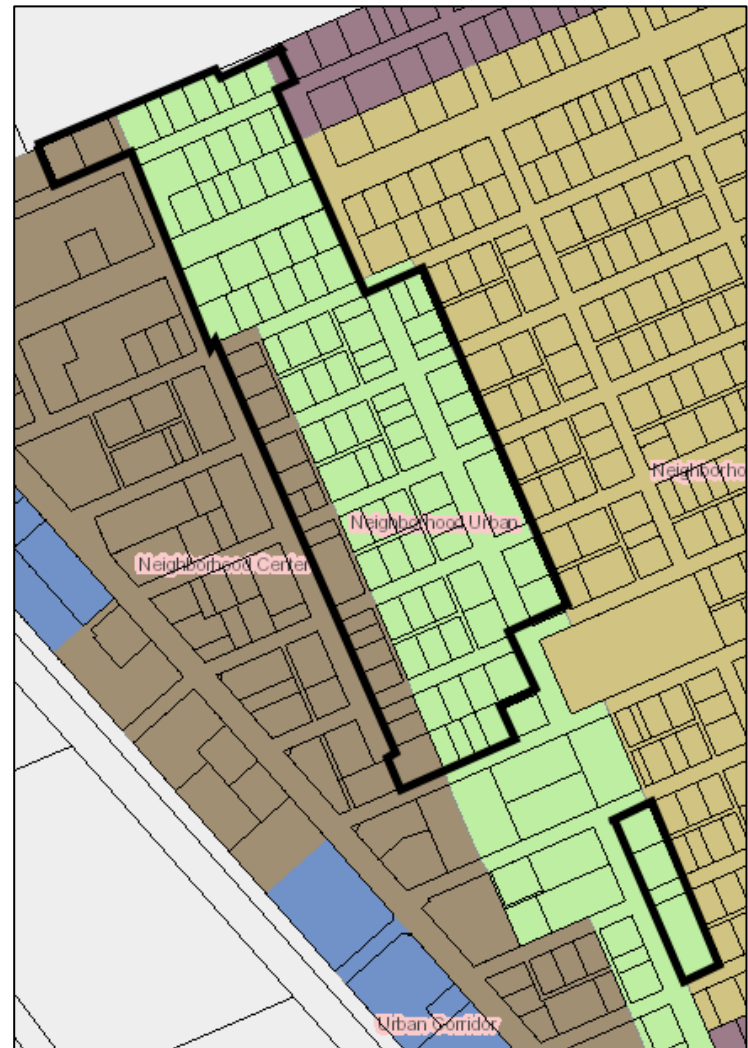


Fig. O. Proposed **General** Subdistrict – underlying zoning districts

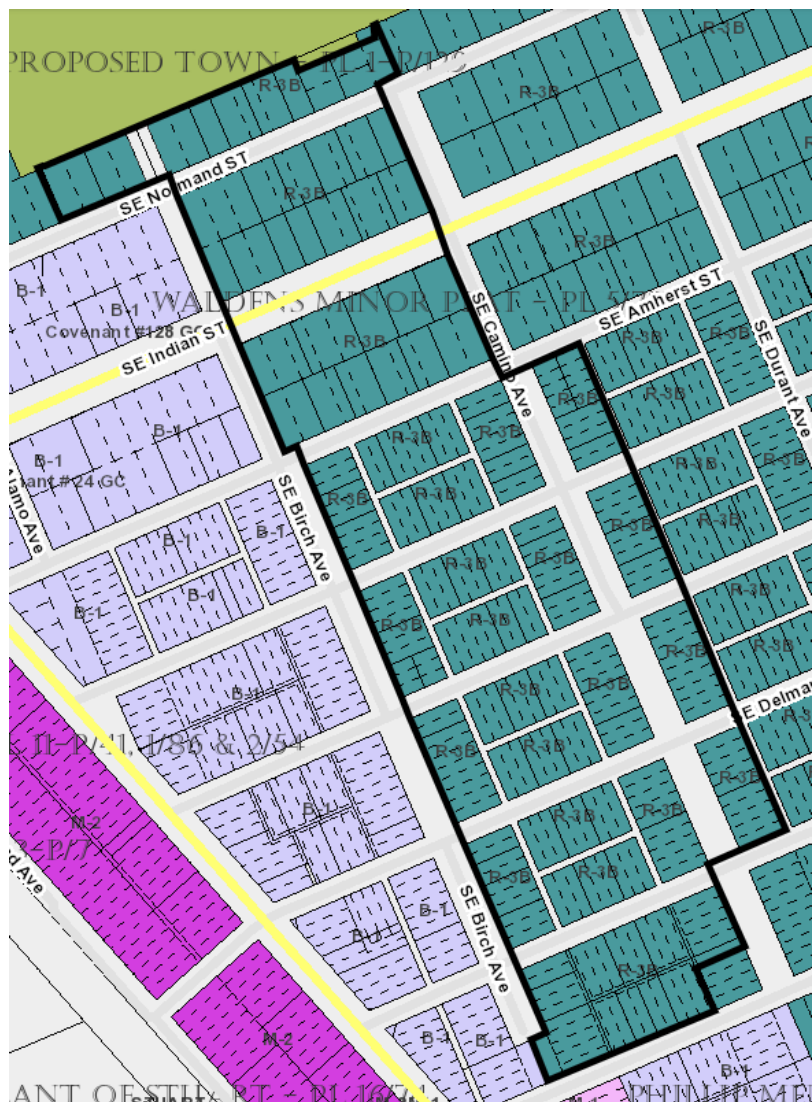


Fig. P. Proposed Industrial Subdistrict
- existing land uses

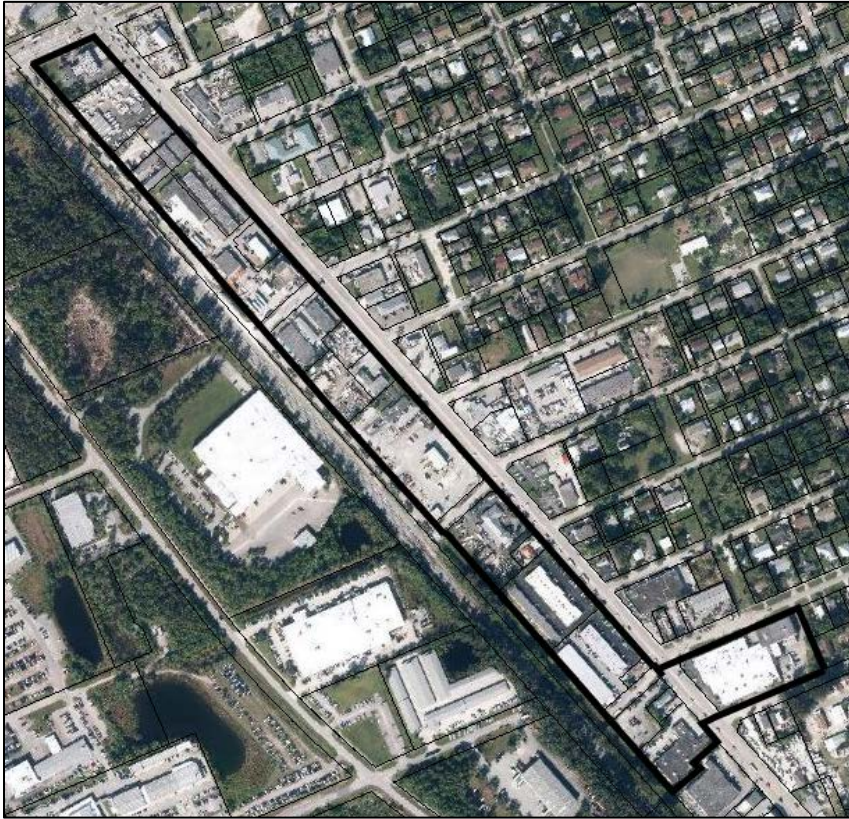


Fig. Q. Proposed Industrial Zoning Subdistrict
- Future Land Use Map

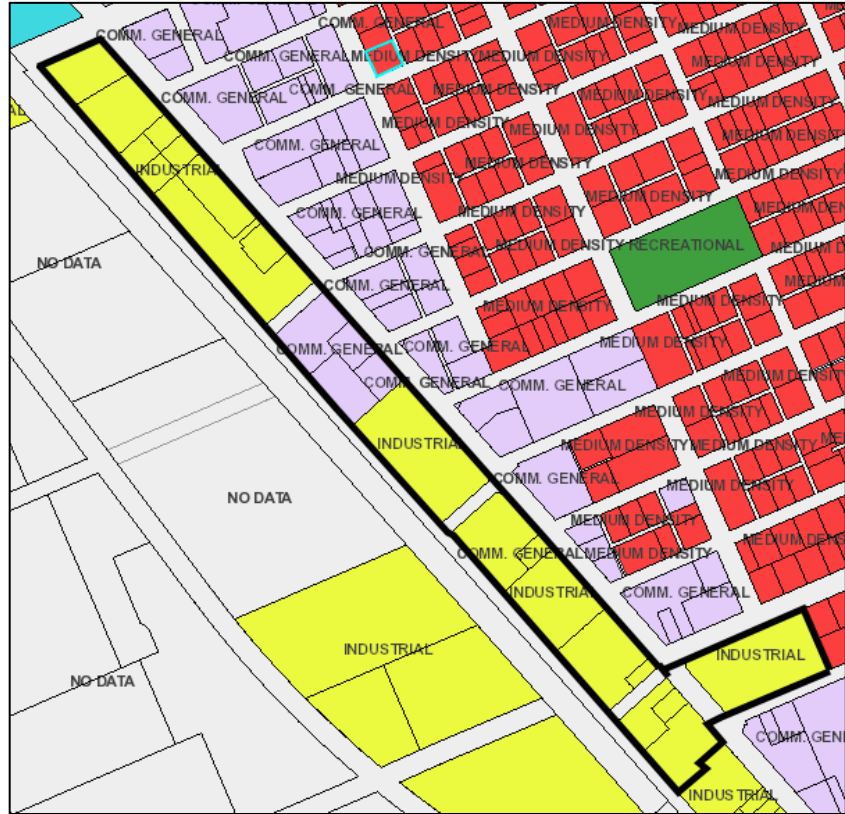


Fig. R. Proposed **Industrial** Subdistrict
- existing Mixed-Use Future Land Use Overlay



Fig. S. Proposed **Industrial** Subdistrict
- existing zoning overlays

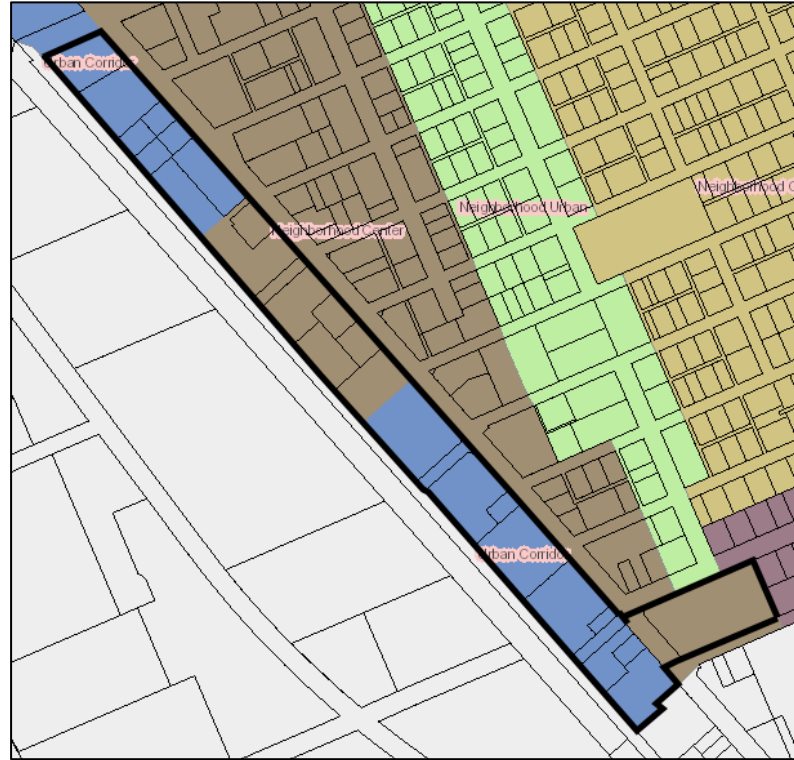


Fig. T. Proposed **Industrial** Subdistrict
- existing underlying zoning districts

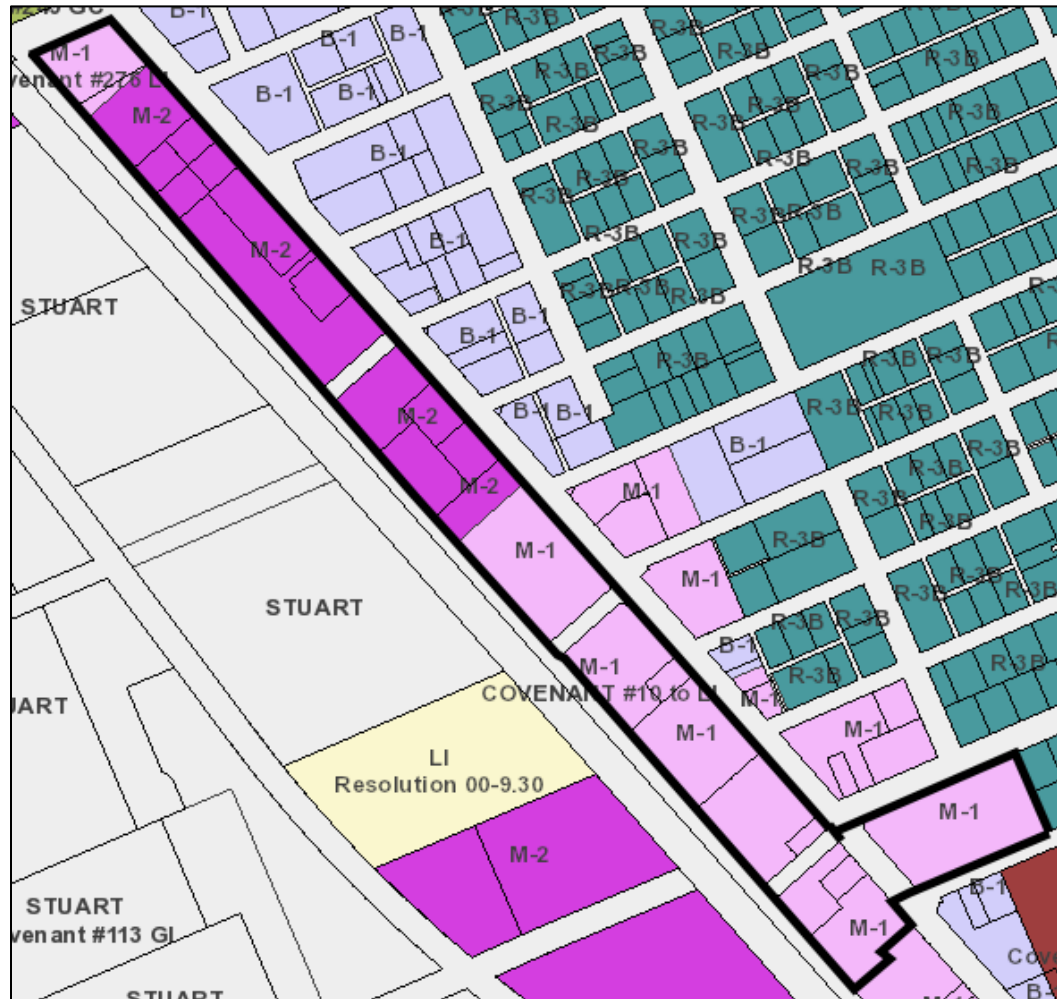


Fig. U. Proposed **Multifamily** Subdistrict - existing development



Fig. V. Proposed **Multifamily** Subdistrict – Future Land Use Map

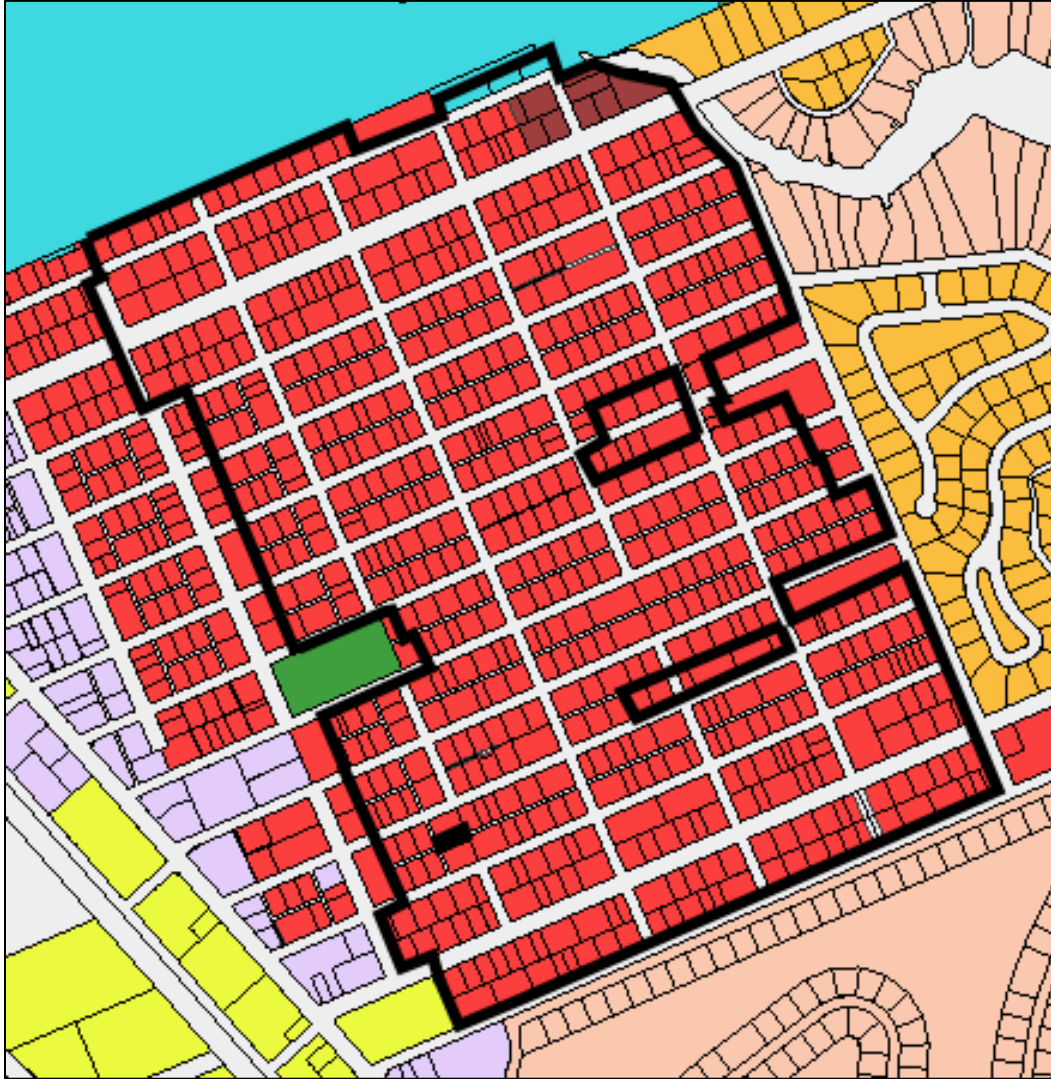


Fig. X. Proposed **Multifamily** Subdistrict – existing zoning overlays

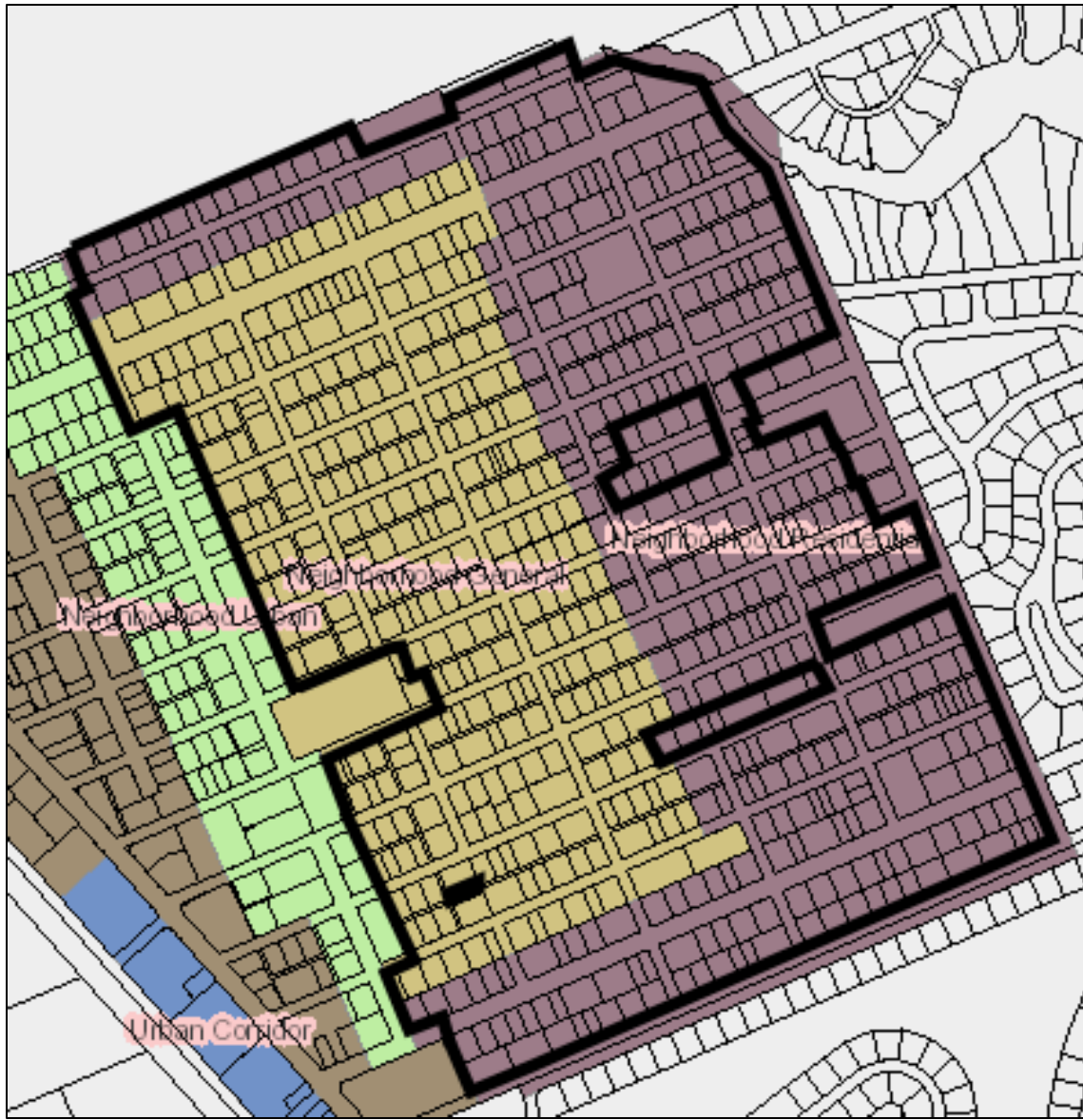


Fig. Y. Proposed **Multifamily** Subdistrict – underlying zoning districts

