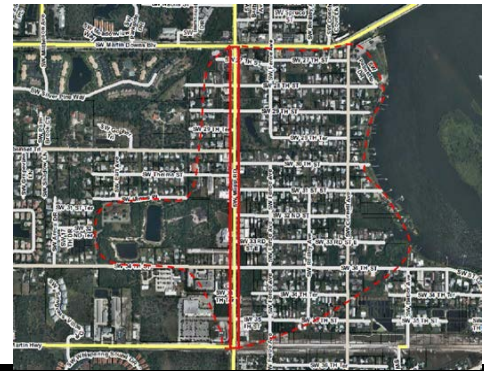


Ripple Eco-Art Stormwater Treatment Revised 01/12/21

Category Non-Concurrency
CIP Rating Score 82
Project Number CRA01
Location Old Palm City CRA
District 5

Project Limits Cornell Avenue from Martin Downs Highway to 29th Terrace

Related Projects
Lead Dept/Division OCD
Year Project Initiated 2015



DESCRIPTION

Enables the County to capture and treat runoff from an estimated 20.25-acre area in Old Palm City and provide water quality benefits by reducing nutrient loads to the St. Lucie Estuary, and assists the County in reaching our BMAP load requirements. This project will also help with flood control enhancing the neighborhood restoration program through Martin County Public Works Department and is collaborating with the Countywide Utilities program, septic to sewer program (Connect to Protect) through land use and design.

BACKGROUND

The project is a partnership between the Martin County Community Redevelopment Agency, the Board of County Commissioners, and the Arts Council of Martin County and will involve significant citizen input and community outreach. The project will improve the quality of this CRA community by providing opportunities for public interaction, water quality improvement, flooding controls, and improved wildlife habitat.

PROJECT ORIGINATION

Levels of Service/Comprehensive Plan Requirements

JUSTIFICATION

Policy 14.1G.1. Project priorities in Community Redevelopment Plans. In its CIP, the County shall give priority to projects identified in adopted Community Redevelopment Plans for the CRA areas that provide infrastructure improvements as provided in Policy 14.1A.10. Policy 14.1G.2. Revenue sources for Community Redevelopment projects. The County shall use tax increment financing, grants and other sources of revenue to fund projects identified in adopted Community Redevelopment Plans.

Expenditures	Total	To Date		Funded					Unfunded
				FY21	FY22	FY23	FY24	FY25	FY26-FY30
Design/Permitting	299,826	299,826							
Eco-Art Structures/Materials	239,750	239,750							
Construction	1,525,000			1,525,000					
Expenditure Total	2,064,576	539,576	0	1,525,000	0	0	0	0	0
Revenues	Total	To Date	Carryover	FY21	FY22	FY23	FY24	FY25	FY26-FY30
TIF - Old Palm City	149,999	145,670	4,329						
Grant	842,134	97,849	744,285						
Ad Valorem	972,443	196,057	776,386						
Franchise Fee	100,000	100,000							
Revenue Total	2,064,576	539,576	1,525,000	0	0	0	0	0	0
Total Unfunded									0

OPERATING BUDGET IMPACT

Stormwater elements and landscaping will be maintained by the Public Works Department