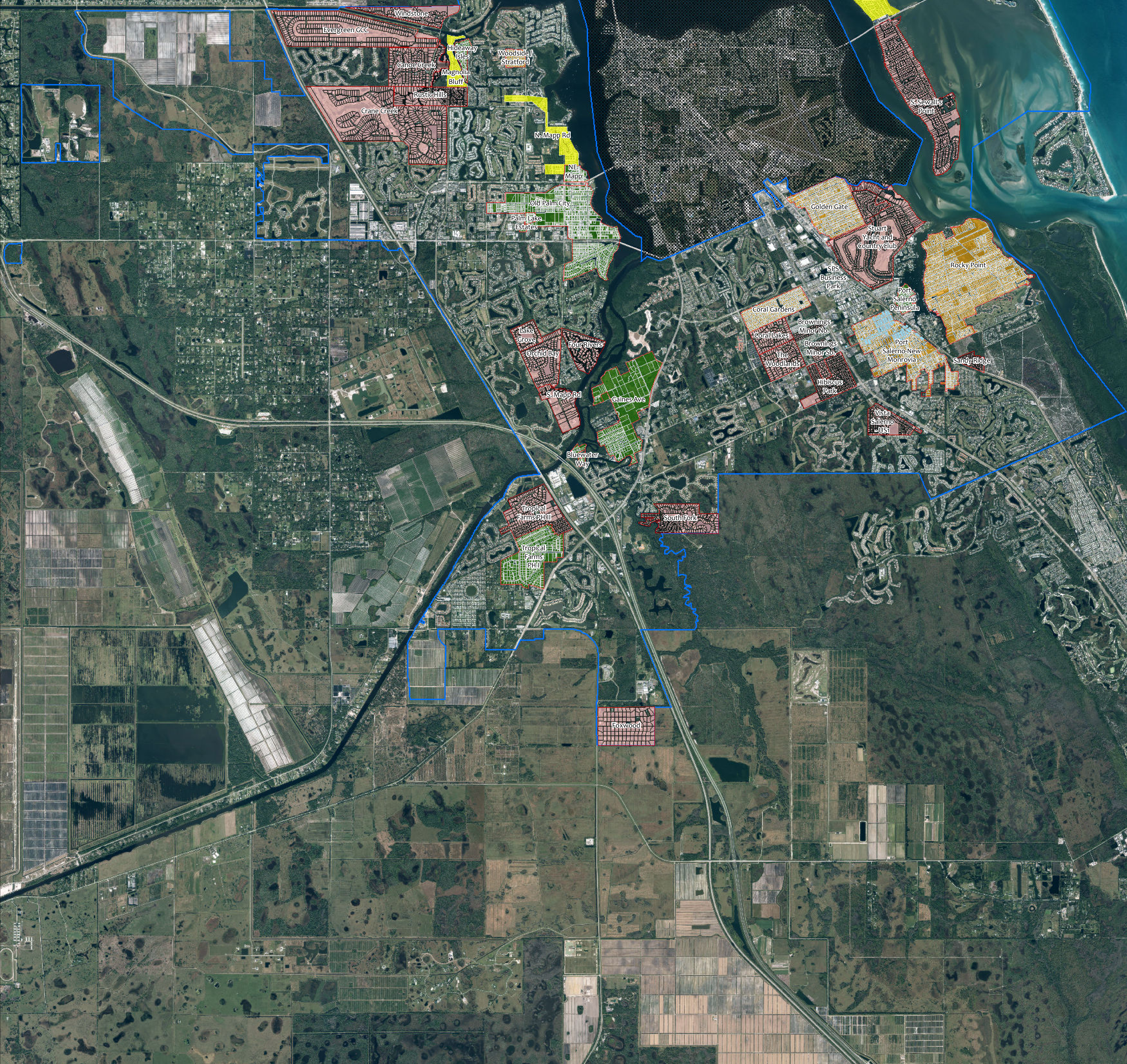


Martin County Utilities
Septic To Sewer Conversions
Infrastructure

Project	Available to Connect	Calendar Year						Parcels to Serve (Sewer)	Parcels to Serve (Potable Water)
		2020	2021	2022	2023	2024	2025		
Vacuum Sewer									
Golden Gate	Summer 2022	Vacuum Sewer & Drains	Vacuum Sewer	Vacuum Sewer, Pumping				764	0
Woodside / Stratford Downs	Fall 2022							78	0
Old Palm City	Fall 2023	Drains	Vacuum Sewer & Potable Water	Vacuum Sewer & Potable Water	Vacuum Sewer & Potable Water	Pumping		1015	377
Port Salerno New Monrovia	Fall 2024	Port Salerno Water (portion of 2022)	Drains					952	290
Coral Gardens	Fall 2025			Drains	Vacuum Sewer & Potable Water	Vacuum Sewer & Potable Water	Vacuum Sewer & Potable Water	638	0
Rocky Point	Fall 2026							1198	383
Totals: →								4645	1050
Grinder Sewer									
Mapp Road North	Connected (30)	Grinder Sewer						201	0
Palm Lake Park	Connected (19)	Grinder Sewer, Tropical Water & Potable						224	224
Magnolia Bluff	Connected (140)	Grinder Sewer						106	0
South Point North	Connected (140)	Grinder Sewer						223	0
Tropical Farms Phase I	Fall 2020	Grinder Sewer, Potable Water & Potable						272	0
Bluewater Way	Winter 2020	Grinder Sewer						25	0
Indian River Drive North	Winter 2020	Grinder Sewer & Potable Water						114	114
Palm Lake Estates	Spring 2021	Drains & Grinder Sewer	Drains & Grinder Sewer, & Potable					48	0
Rio West	Spring 2021	Grinder Sewer						281	0
Spinnaker Point Place	Summer 2021	Grinder Sewer						12	0
Shore Village Terrace	Summer 2021	Grinder Sewer						10	0
Rosewalk	Summer 2021	Grinder Sewer						8	0
Beau Rivage	Summer 2021	Drains, Grinder Sewer, Potable Water & Potable						270	270
Rio South	Fall 2021	Grinder Sewer						134	0
Gaines Avenue	Winter 2021	Grinder Sewer & Drains						157	157
Hideaway Isles	Winter 2021	Grinder Sewer & Potable Water	Grinder Sewer & Potable Water	Drains, Grinder Sewer & Potable				72	72
Port Salerno Peninsula	Summer 2022	Grinder Sewer & Potable Water	Grinder Sewer & Potable Water	Drains, Grinder Sewer & Potable				116	0
Mapp Road NE	Summer 2022							53	0
Rio Central	Summer 2022			Grinder Sewer				241	0
Rio East	Summer 2023				Grinder Sewer			185	0
Totals: →								3749	837

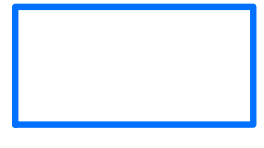
* This document is accurate as of November 1st, 2020. This document is for planning purposes only and schedule is subject to change. *

FY 20 - FY 26
Available to Connect
Spring 2020 - Fall 2026

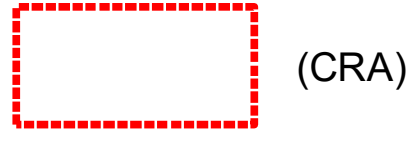


Martin County Utilities and Solid Waste Department
Septic to Sewer (S2S) Conversion Program

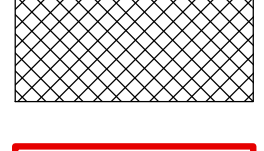
UNAUTHORIZED USE OF ELECTRONIC FILES WITHOUT THE CONSENT OF MARTIN COUNTY UTILITIES IS PROHIBITED. ELECTRONIC FILES ARE FOR REFERENCE PURPOSES ONLY. NOT FOR CONSTRUCTION. THESE DRAWINGS ARE NOT VALID WITHOUT SIGNATURE, SEAL, AND DATE AFFIXED BY THE ENGINEER OF RECORD.



MCU



(CRA)



STUART



Project Basins



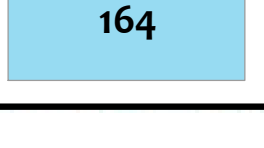
Available to Connect



Parcels to Serve Grinder Sewer 5 Year Plan



Parcels to Serve Vacuum Sewer 5 Year Plan



164 Customer getting Potable water now

Prepared by: Mark L. Woodruff
Email: mwoodruff@martin.fl.us
Phone: 772-233-7982
Date: 1/5/2021
Scale: 1:26,500