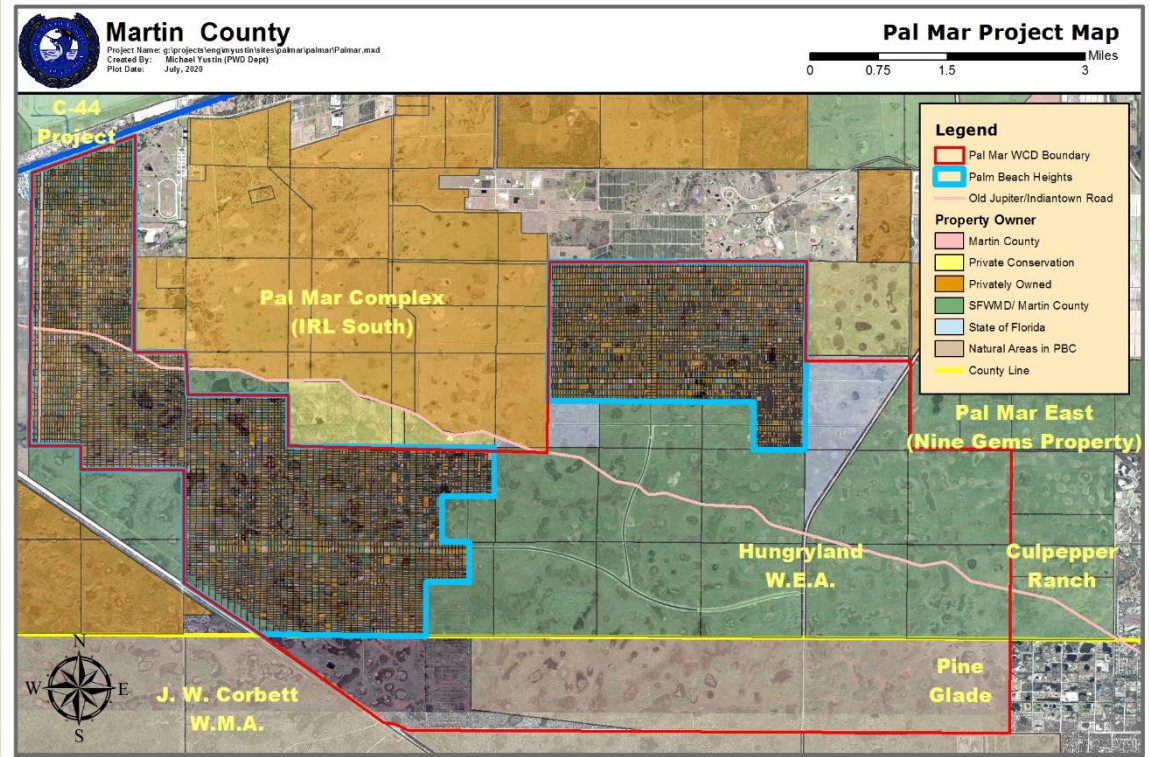


PAL MAR PRESENTATION



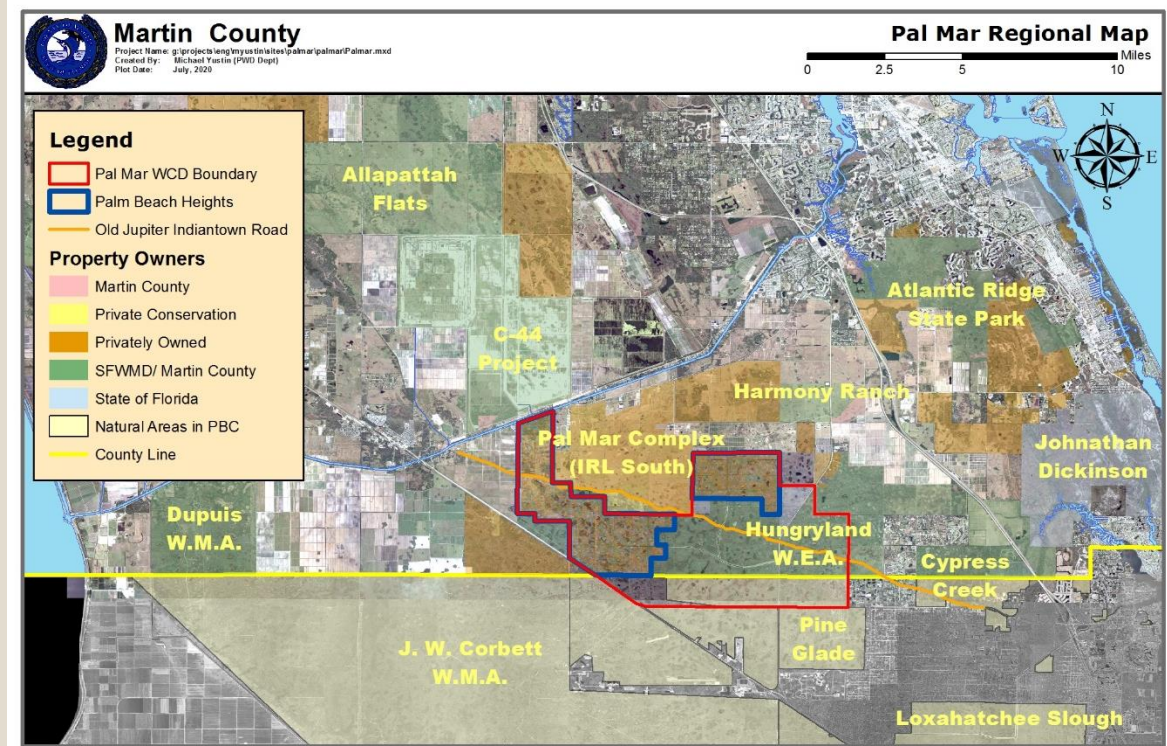
INTRODUCTION

- Pal Mar is a 28,000+ acre wetland dominated system on the border between Palm Beach and Martin County
- Wetlands cover close to 90% of the area



REGIONAL SIGNIFICANCE

- Part of a 100,000+ acre Ocean to Lake Greenway system
- Some of highest quality wetland systems in the Everglades system



RECREATIONAL COMPONENT

- Potential to connect regional trail networks
- Hiking, biking, hunting, equestrian uses, wildlife observation



LOXAHATCHEE CERP PROJECT

- Area is also part of the headwaters to the Wild and Scenic NW Fork of the Loxahatchee River
- The eastern portion is within the Loxahatchee River CERP Project



HISTORICAL CONTEXT

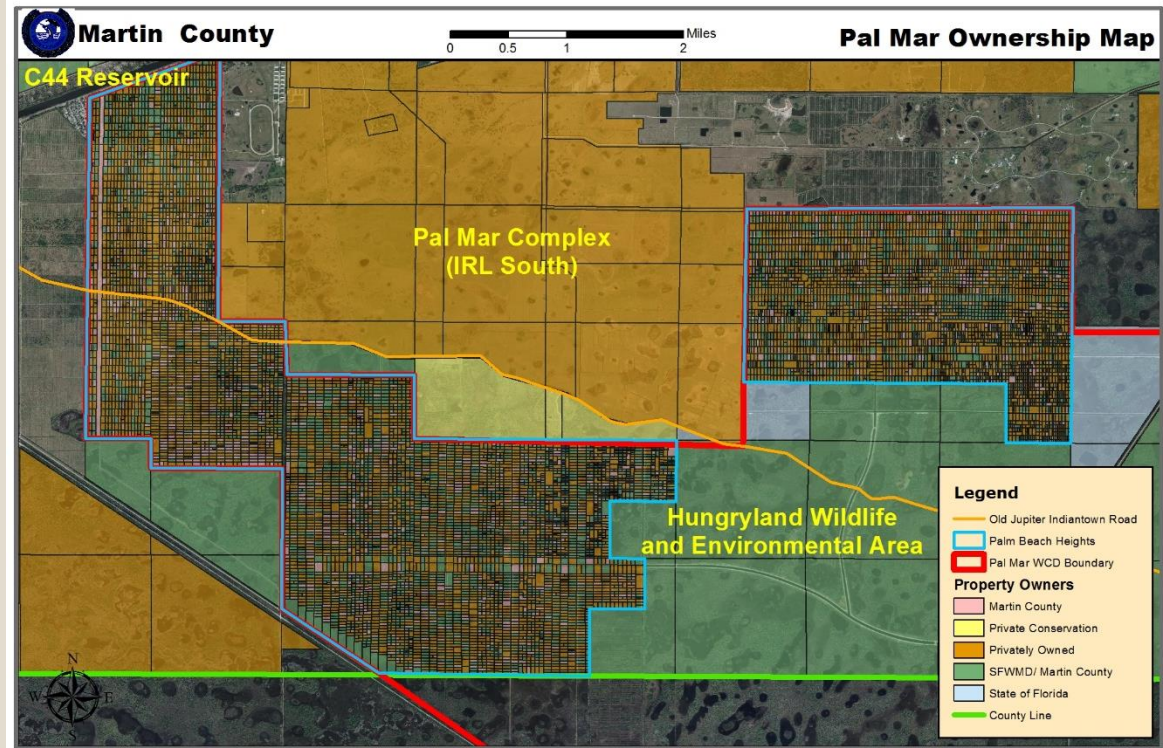
- **Martin County has been working to preserve the Pal Mar area since the 1970's to protect it's unique conservation values**



Photo Credit to Greg Braun

LAND ACQUISITION

- County helped acquire over 23,000-acres and spent \$10 million
- Still close to 5,054-acres of privately held land
- No State money in over 10 years



ENVIRONMENTAL THREATS

- Remaining areas not manageable
- Vehicles having major negative impact on wetlands ecosystems
- Exotic vegetation expanding and will become harder to control over time



COUNTY GOALS

- PROTECTING LANDS THAT HAVE ALREADY BEEN ACQUIRED
- CONTINUE ACQUIRING LOTS WITHIN PALM BEACH HEIGHTS
- PREVENT CHANGES TO DRAINAGE PATTERNS THAT WOULD BE DETRIMENTAL TO ENVIRONMENTAL VALUES

