

MARTIN COUNTY ►  
PUBLICWORKS  
**@WORK**

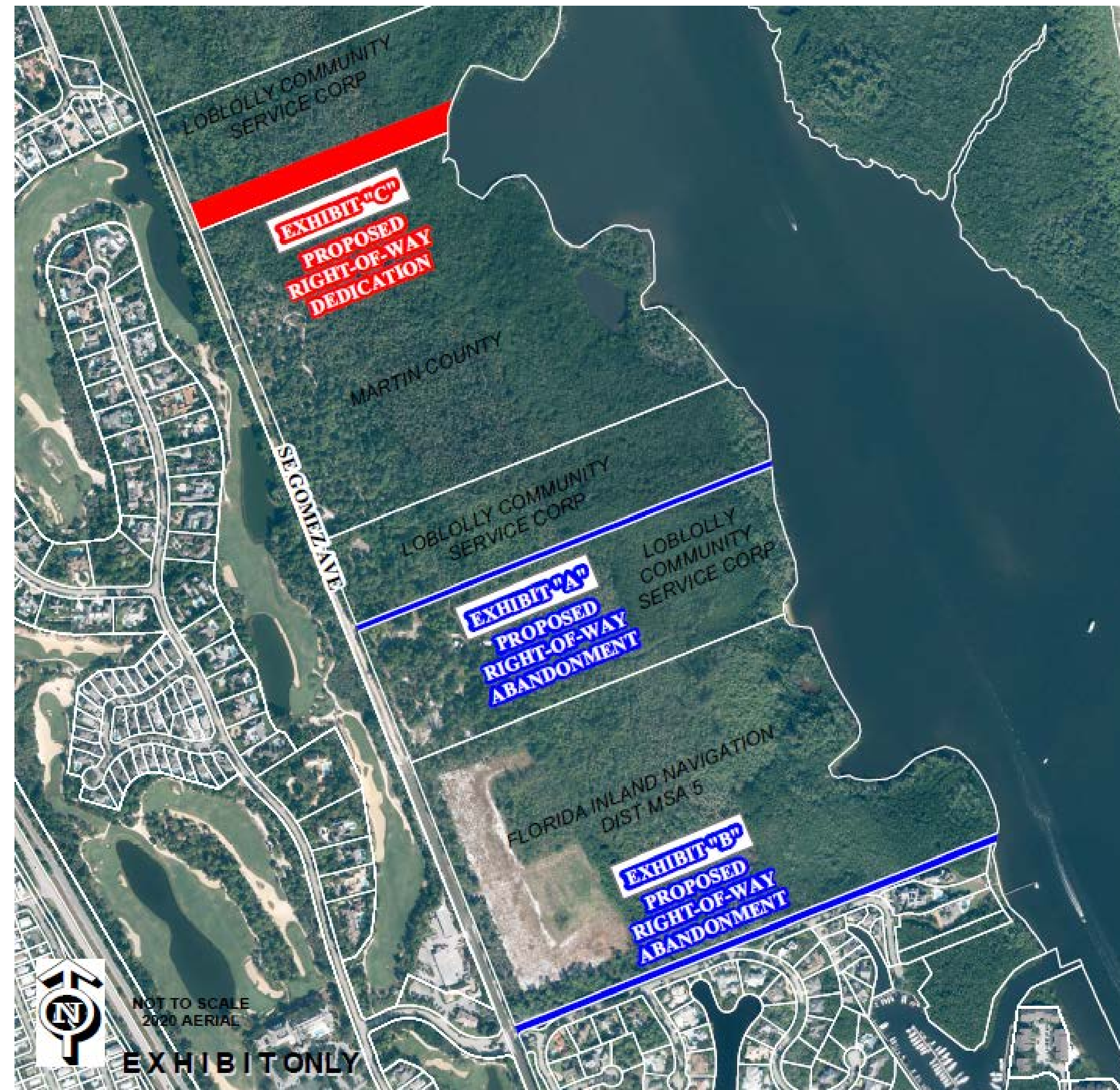
APRIL 27, 2021

---

RIGHT-OF-WAY ABANDONMENT REQUEST  
LOBLOLLY COMMUNITY SERVICE CORPORATION



# OVERVIEW MAP



MARTIN COUNTY  
PUBLICWORKS  
@WORK



NOT TO SCALE  
2020 AERIAL

EXHIBIT ONLY



# OVERVIEW MAP



Gomez Grant  
Platted in 1910



MARTIN COUNTY  
PUBLICWORKS  
@WORK

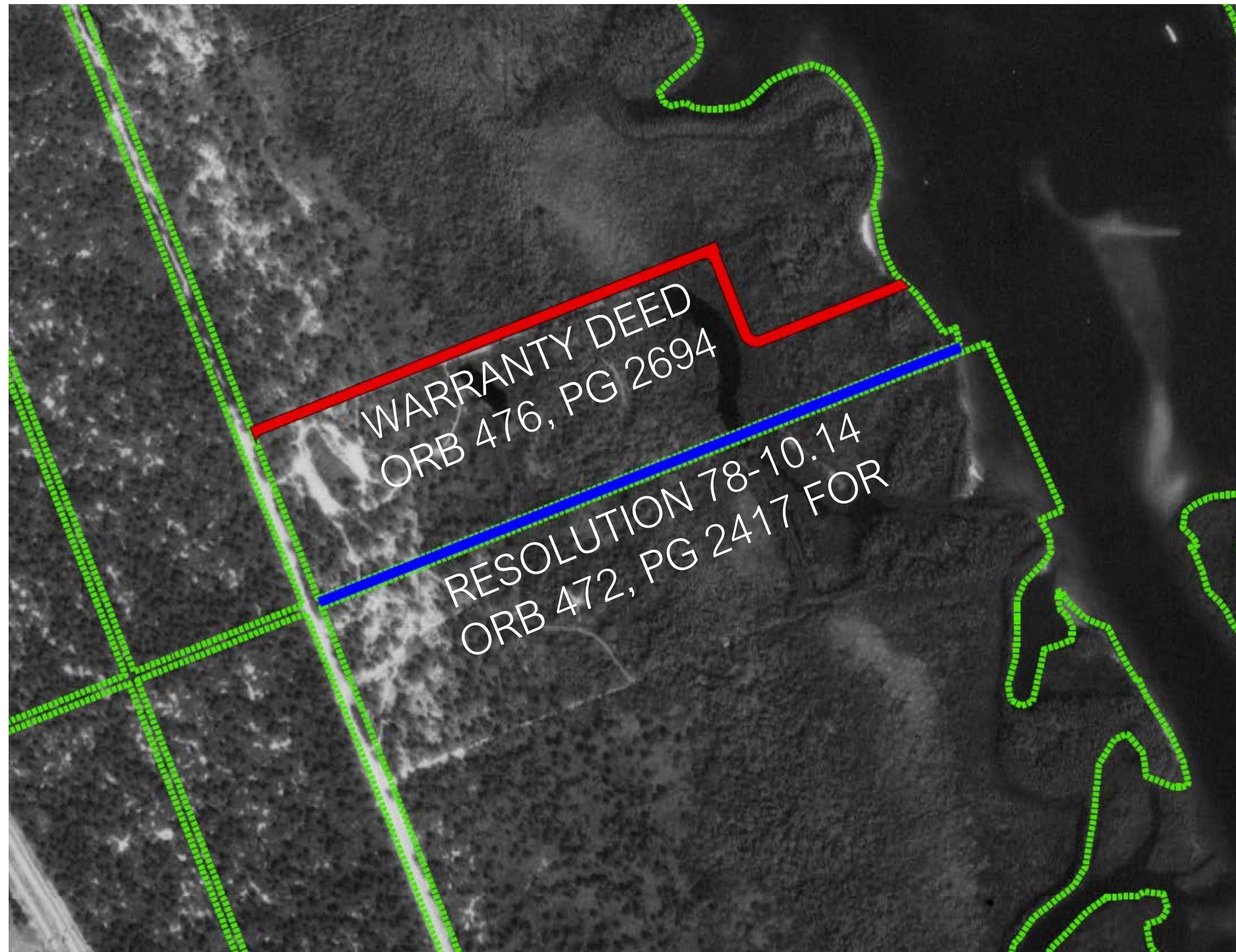


# 1979 RIGHT-OF-WAY ABANDONMENT





# 1979 RIGHT-OF-WAY ABANDONMENT





# 1979 RIGHT-OF-WAY ABANDONMENT

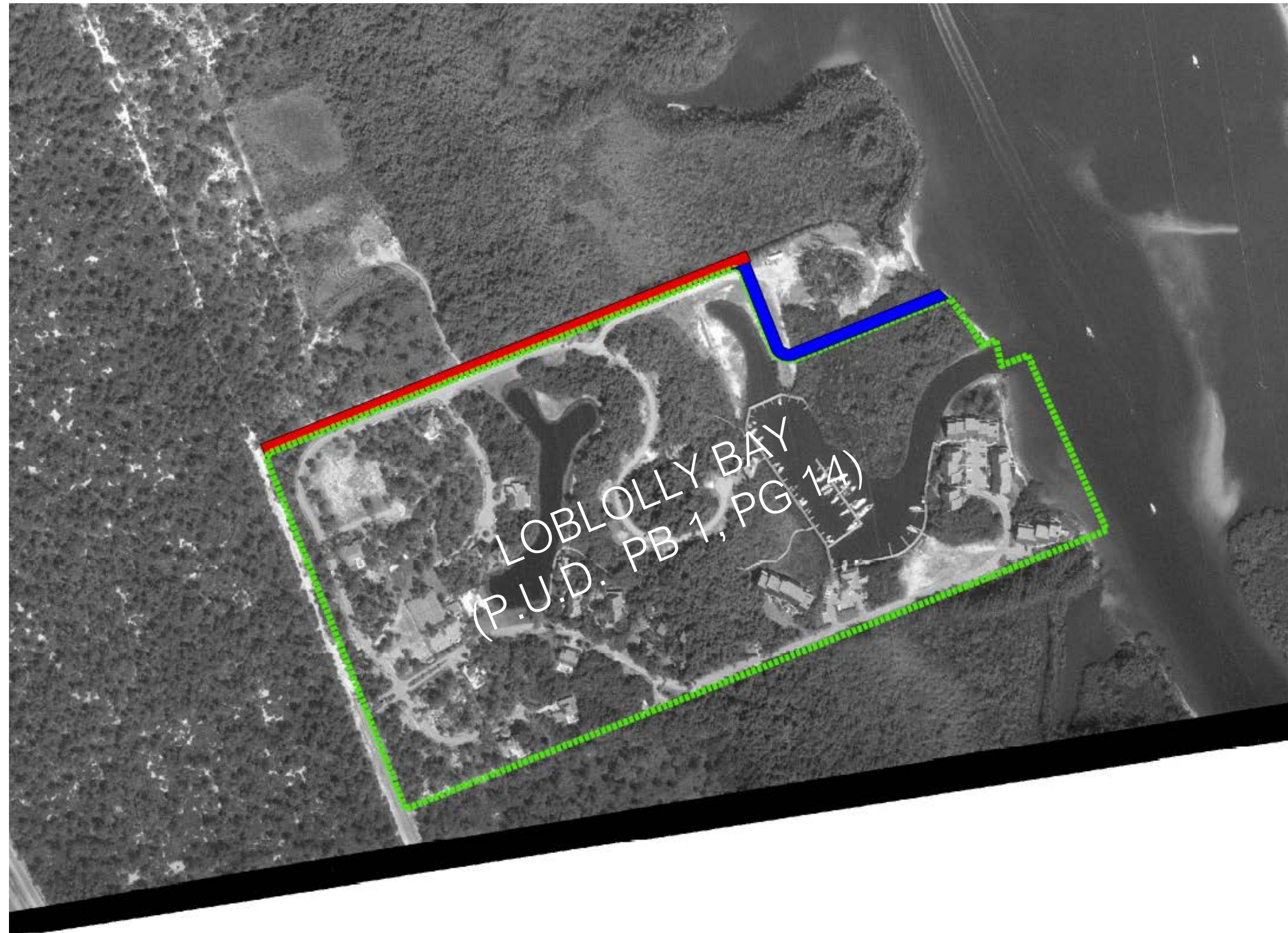


Loblolly Bay Platted  
in 1980



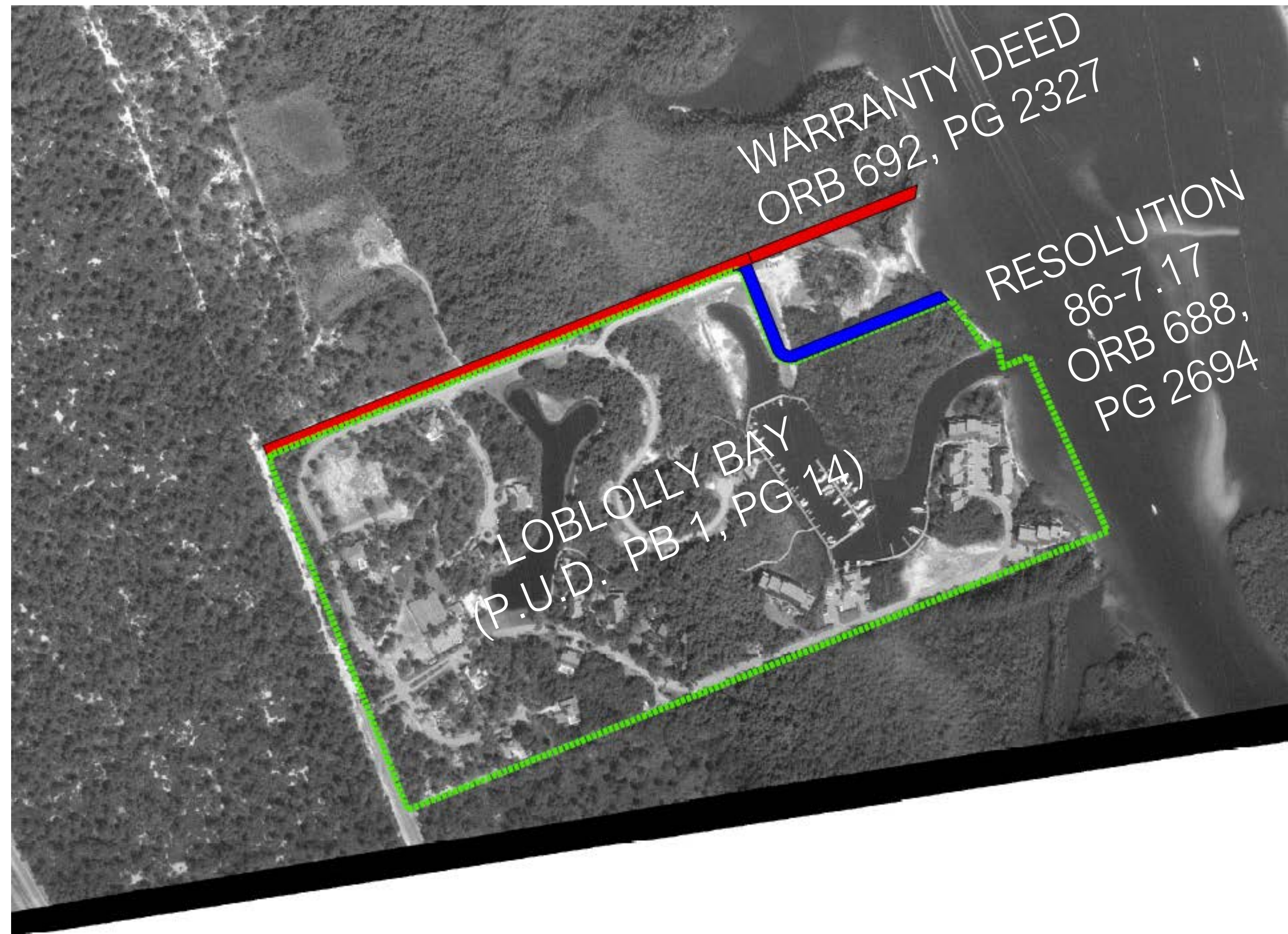


# 1986 RIGHT-OF-WAY ABANDONMENT



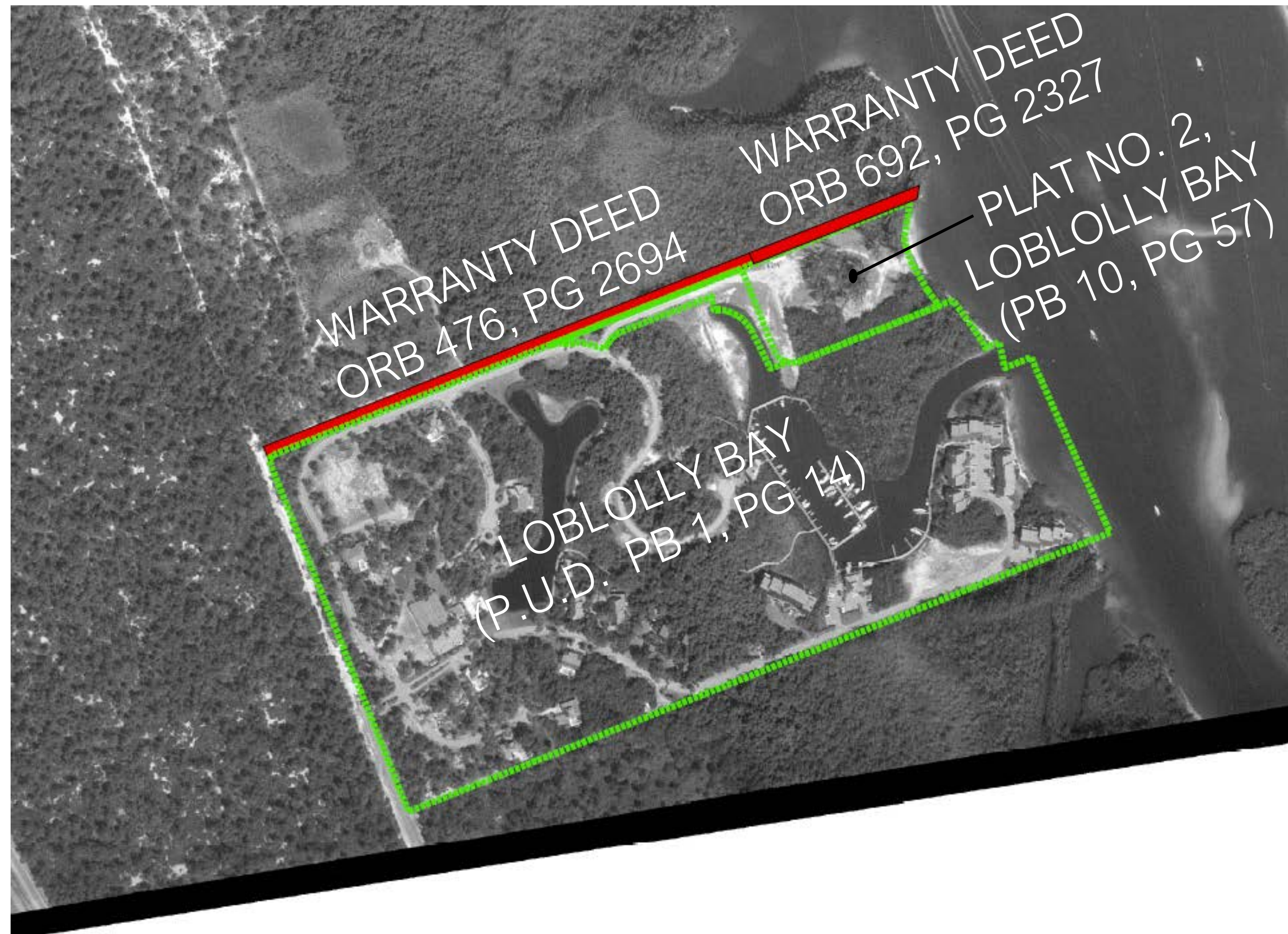


# 1986 RIGHT-OF-WAY ABANDONMENT





# 1986 RIGHT-OF-WAY ABANDONMENT



Plat No. 2,  
Loblolly Bay,  
Platted in 1986



MARTIN COUNTY  
PUBLICWORKS  
@WORK



# 2021 RIGHT-OF-WAY ABANDONMENT REQUEST



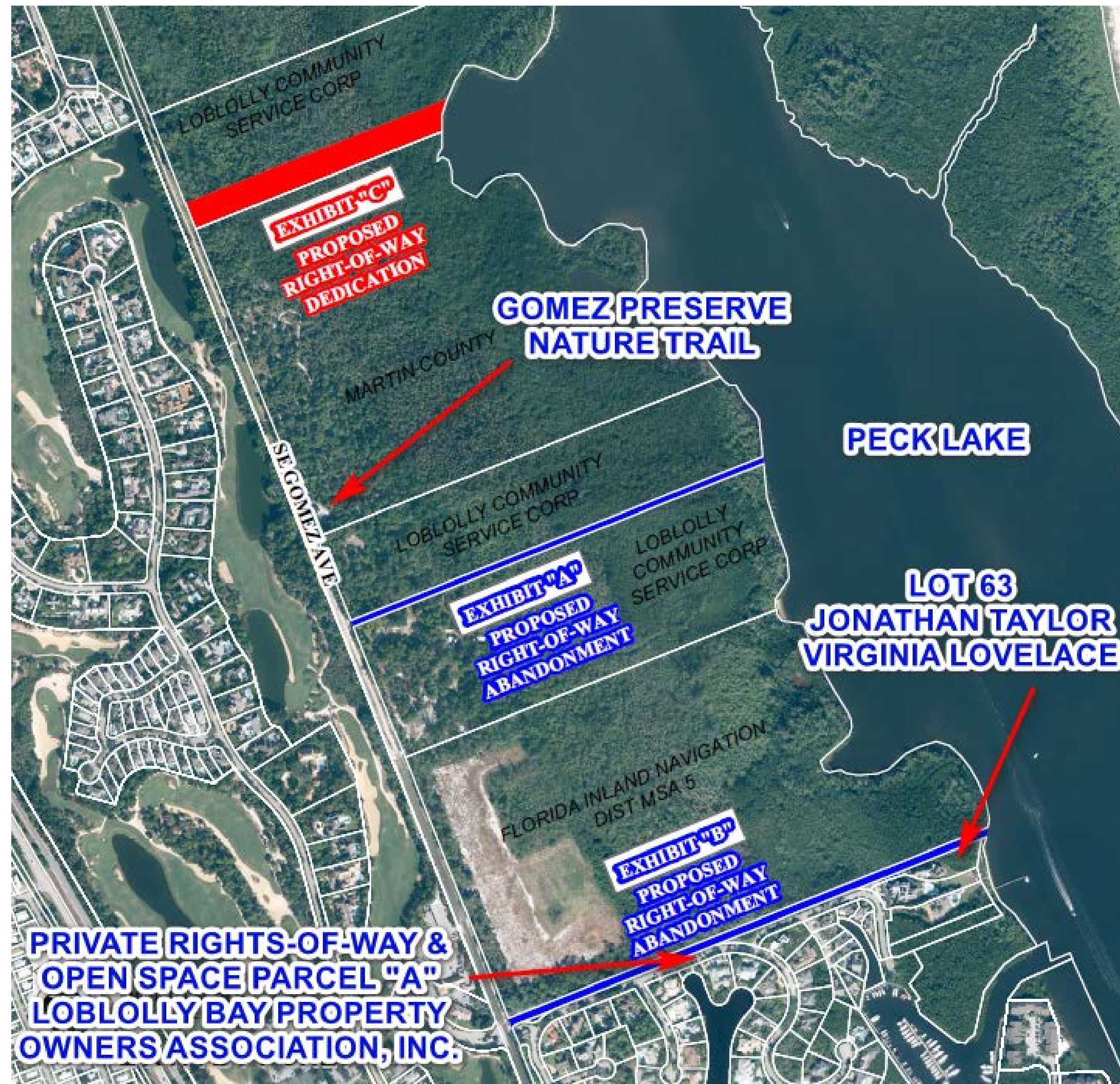
Proposed Right-of-Way abandonment described in Exhibit “B” consists of remaining portions of ORB 476, Page 2694 and ORB 692, Page 2327.





# OVERVIEW MAP

Approximately 2000'  
between each



MARTIN COUNTY  
PUBLICWORKS  
@WORK