

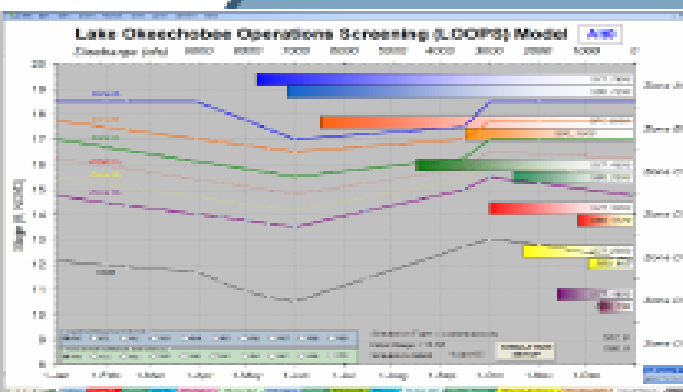
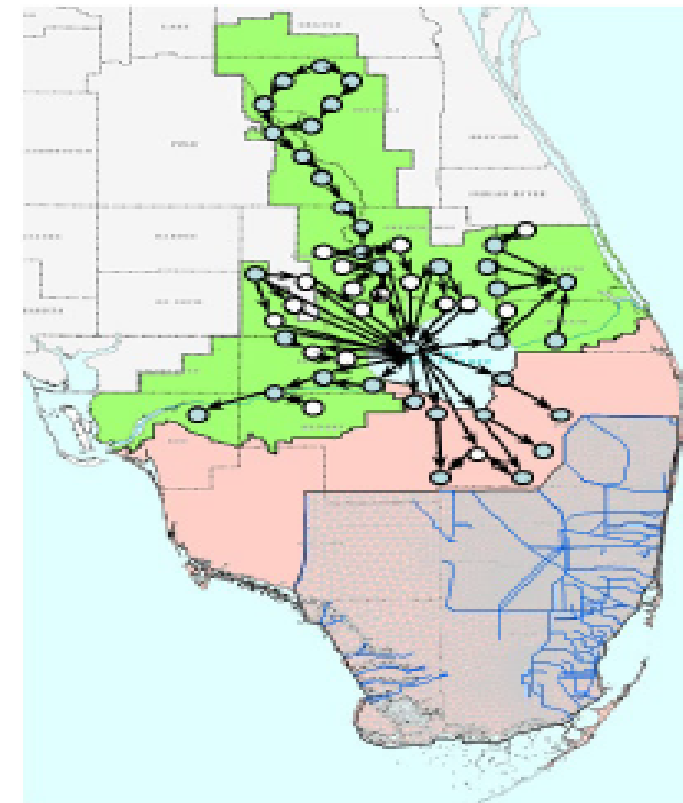
MARTIN COUNTY ►
PUBLICWORKS
@WORK

JUNE 22, 2021

LOSOM ALTERNATIVE DISCHARGE SCHEDULES



WHERE ARE WE?



Iteration 3
Preferred Alternative

Iteration 2
Balanced Alternatives

☒ **Iteration 1**
Single Objective Plans

☒ **Conceptual Plan Analysis**

☒ **Sensitivity Analysis**



MARTIN COUNTY
PUBLICWORKS
@WORK



USACE ITERATION 2 ALTERNATIVES

Alternative AA: Increases flows South, Reduces flows to SLE, Reduces high and low to CRE, Improves water supply

Alternative BB: Increases flows South, Reduces flows to SLE, Reduces high and low to CRE, Addresses algal bloom risk, Improves water supply

Alternative CC: Increases flows South, Reduces flows to SLE, Reduces high and low to CRE, Improves water supply

Alternative DD: Emphasizes dry season flows South, Reduces flows to SLE, Reduces high and low to CRE, Addresses algal bloom risk, Improves water supply, Manages lake stage for lake ecology, Incremental improvement from FWO across all objectives

Alternative EE: Incorporates memory and flexibility





USACE ALTERNATIVE PERFORMANCE

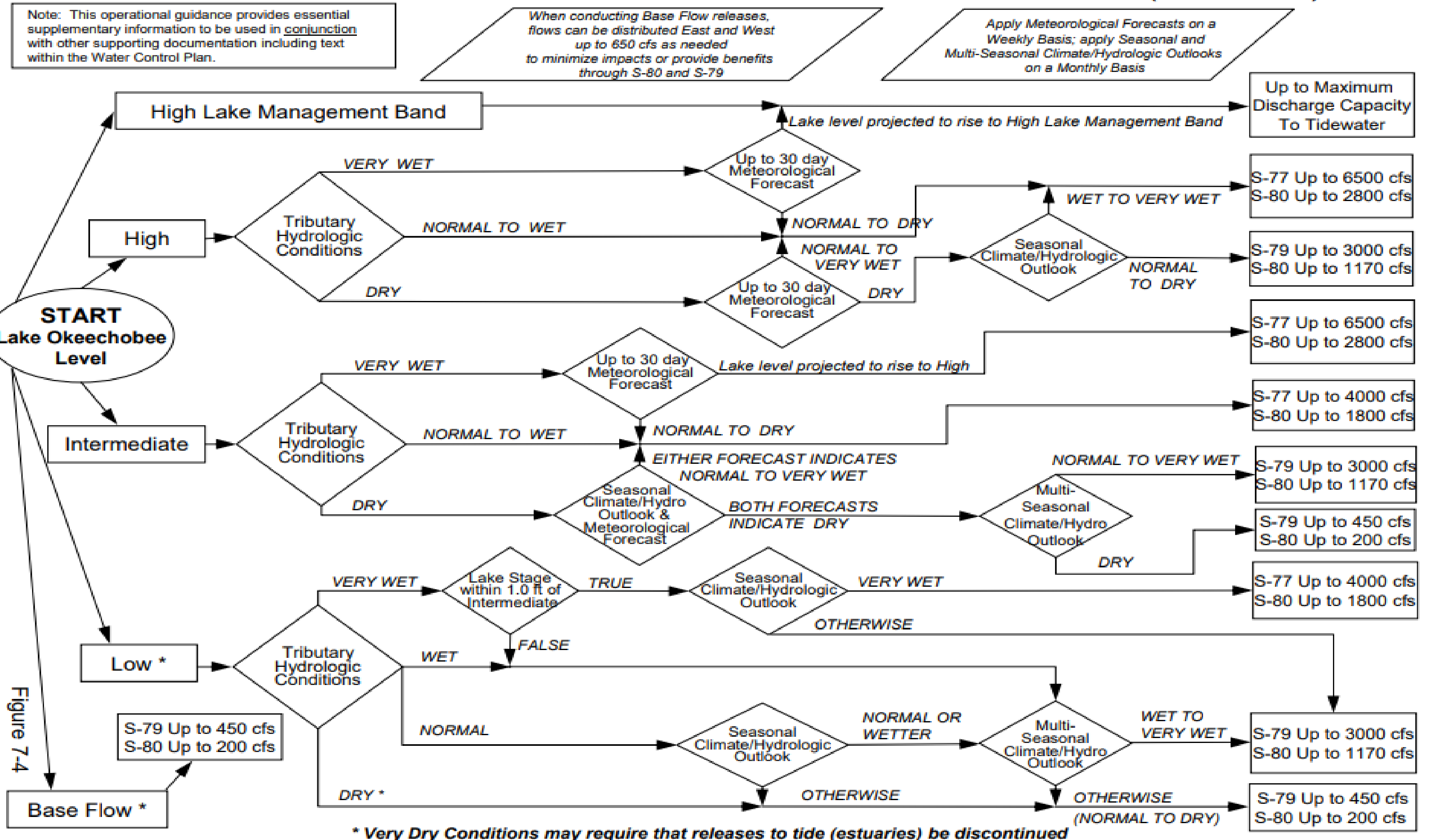
- Plan AA: Reduces Lake Okeechobee discharges by 71%
- Plan BB: **Increases** Lake Okeechobee discharges by 20%
- Plan CC: Reduces Lake Okeechobee discharges by 59%
- Plan DD: Reduces Lake Okeechobee discharges by 22%
- Plan EE1: Neither reduces or increases Lake Okeechobee discharges
- Plan EE2: Reduces Lake Okeechobee discharges by 11%



2008 LORS DECISION TREE: (EXISTING)

2008 LORS

Part D: Establish Allowable Lake Okeechobee Releases to Tide (Estuaries)





LOSOM SCHEDULE

- June 9: Release of performance output data for Iteration 2
- June 17: Data overview meeting
- June 22 & 30: Iteration 2 Workshops
- July 7: Provide preferred alternative and recommendations to PDT
- July 14: Army Corps expected to release Tentatively Selected Schedule

