

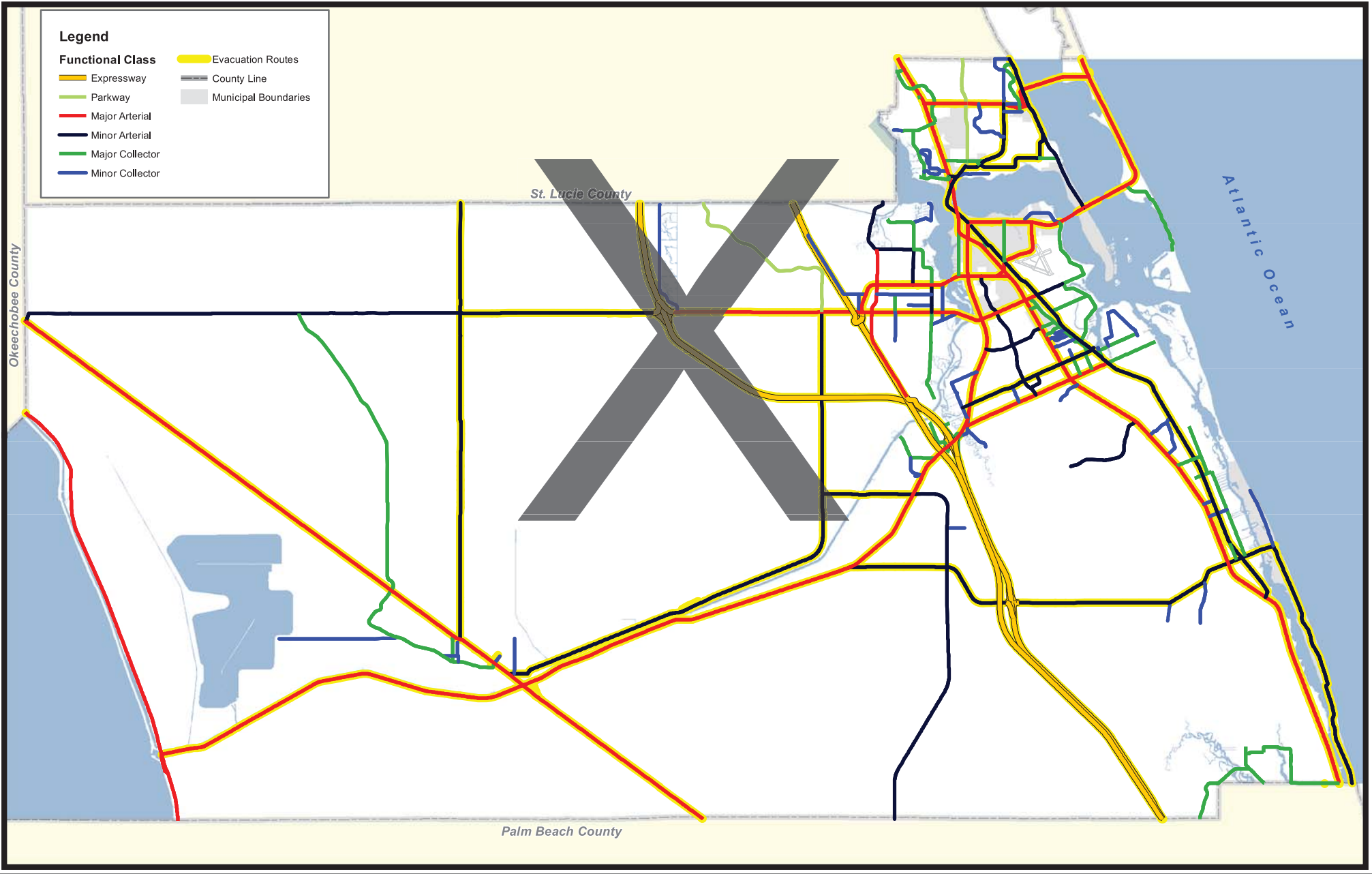
Attachment: 2017 Existing Transportation  
Map Series (stricken) and 2021 Existing  
Transpiration Map Series



# Martin County

## 2017 Transportation Map Roadway Functional Class and Evacuation Figure 5-1A

October 24, 2017

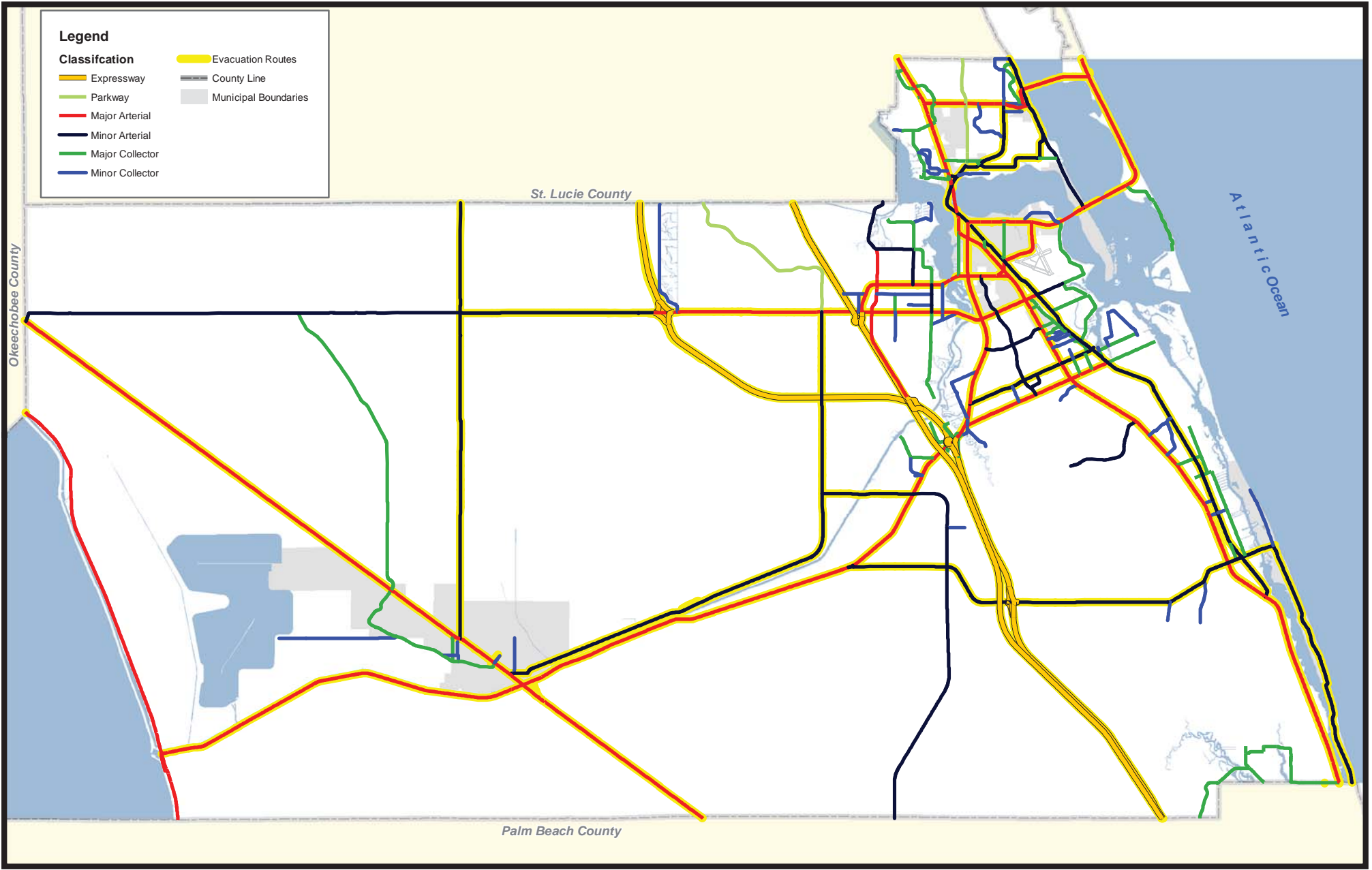
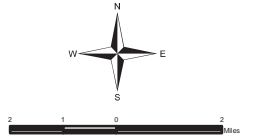




# Martin County

Draft March 24, 2021

## 2021 Transportation Map Roadway Functional Classification and Evacuation Figure 5-1A

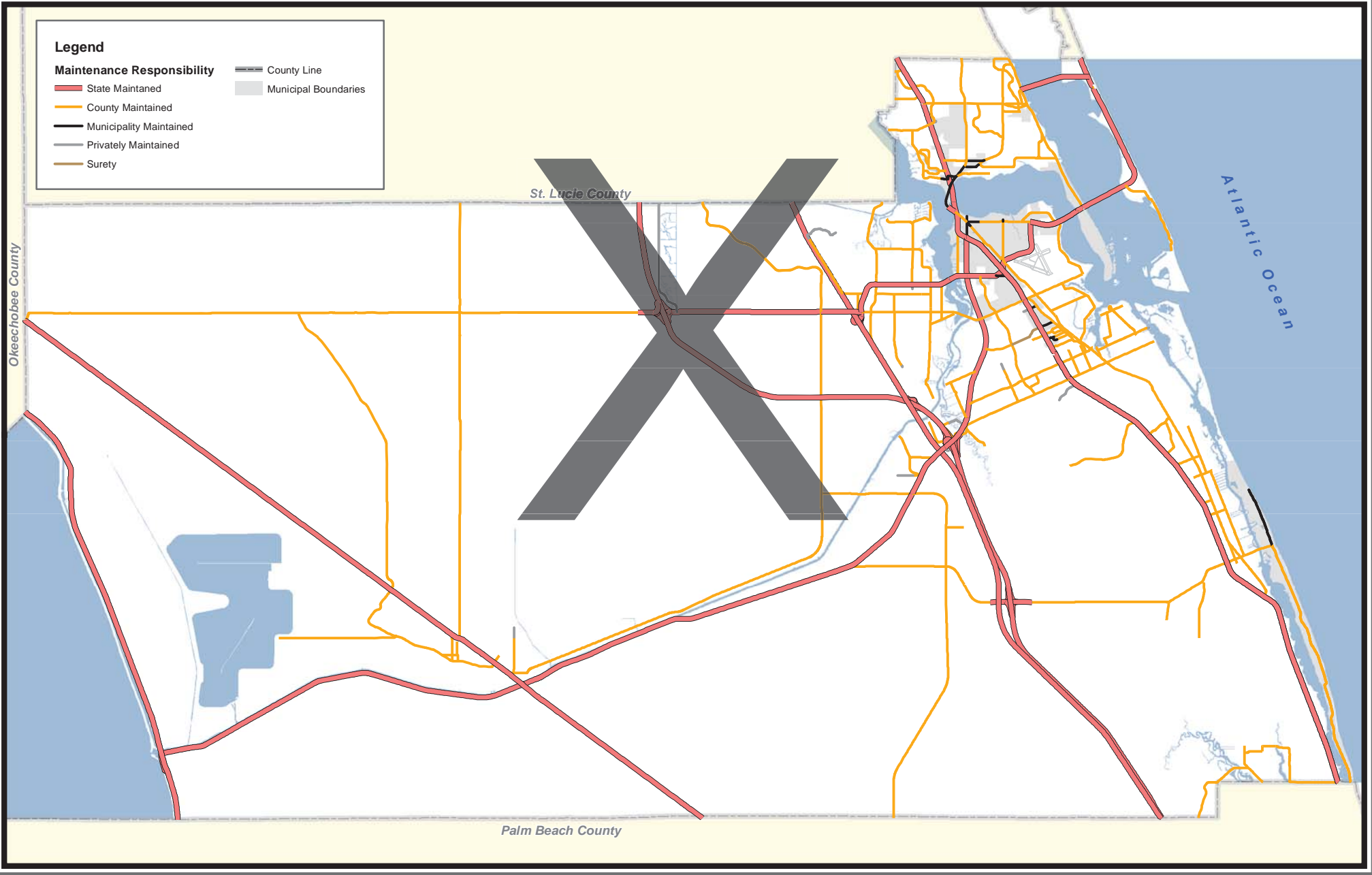
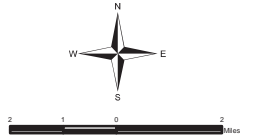




# Martin County

Draft October 24, 2017

## 2017 Transportation Map Roadway Maintenance Figure 5-1B

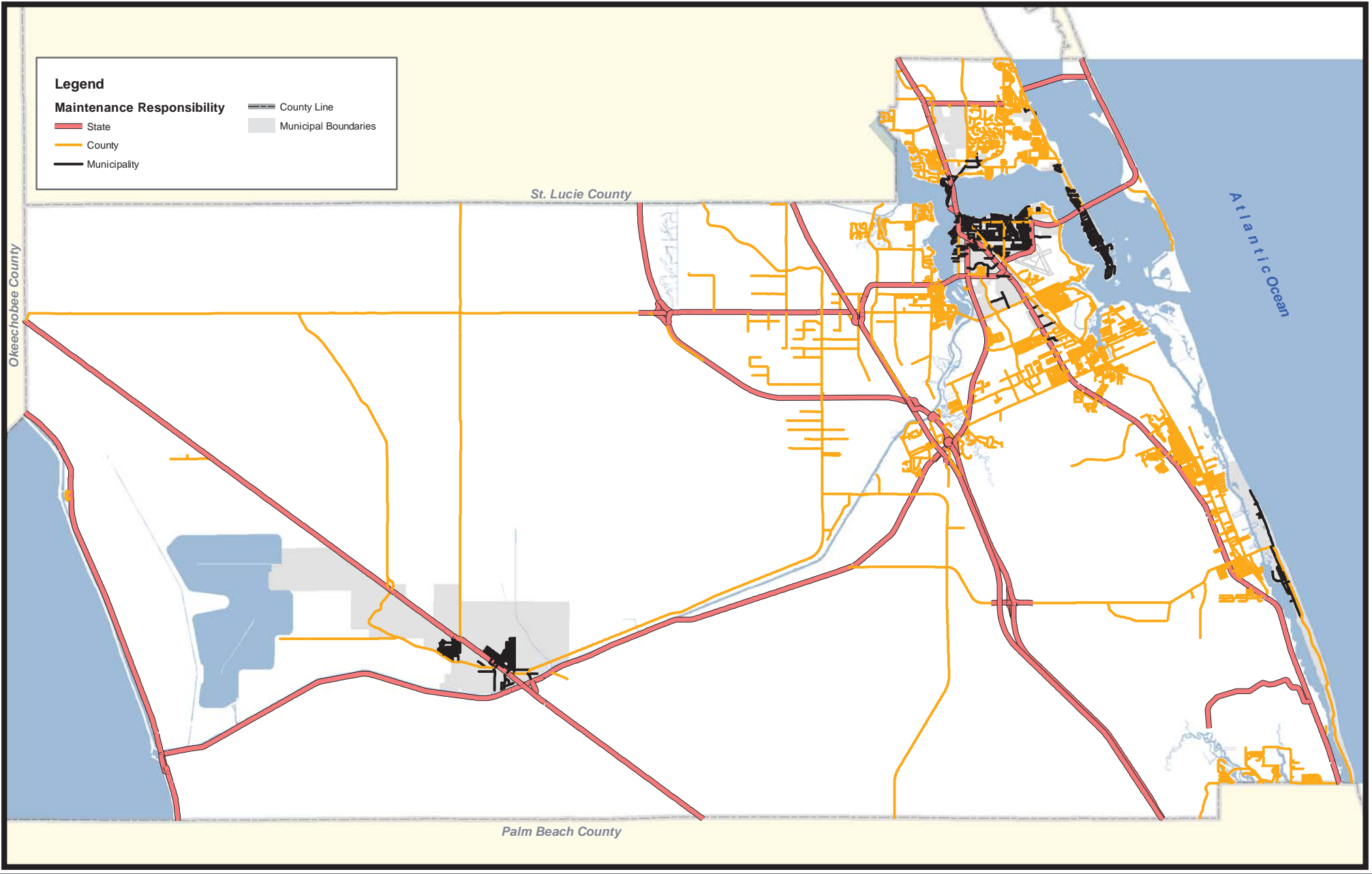
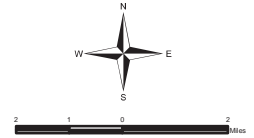




# Martin County

Draft February 24, 2021

## 2021 Transportation Map Roadway Maintenance Figure 5-1B

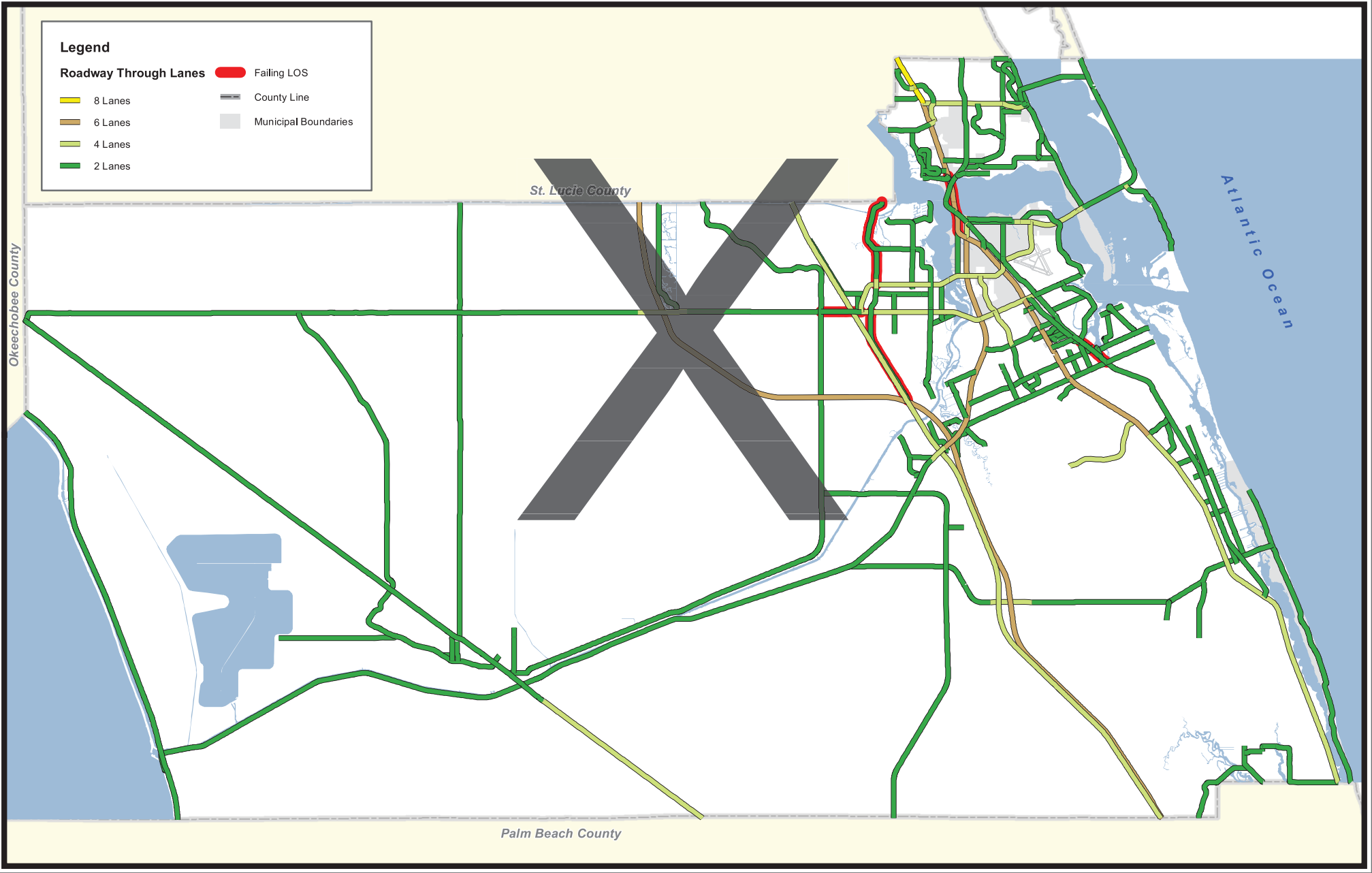
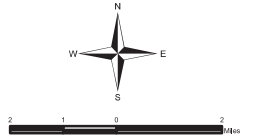




# Martin County

October 24, 2017

## 2017 Transportation Map Roadway Lanes and Level of Service Figure 5-1C



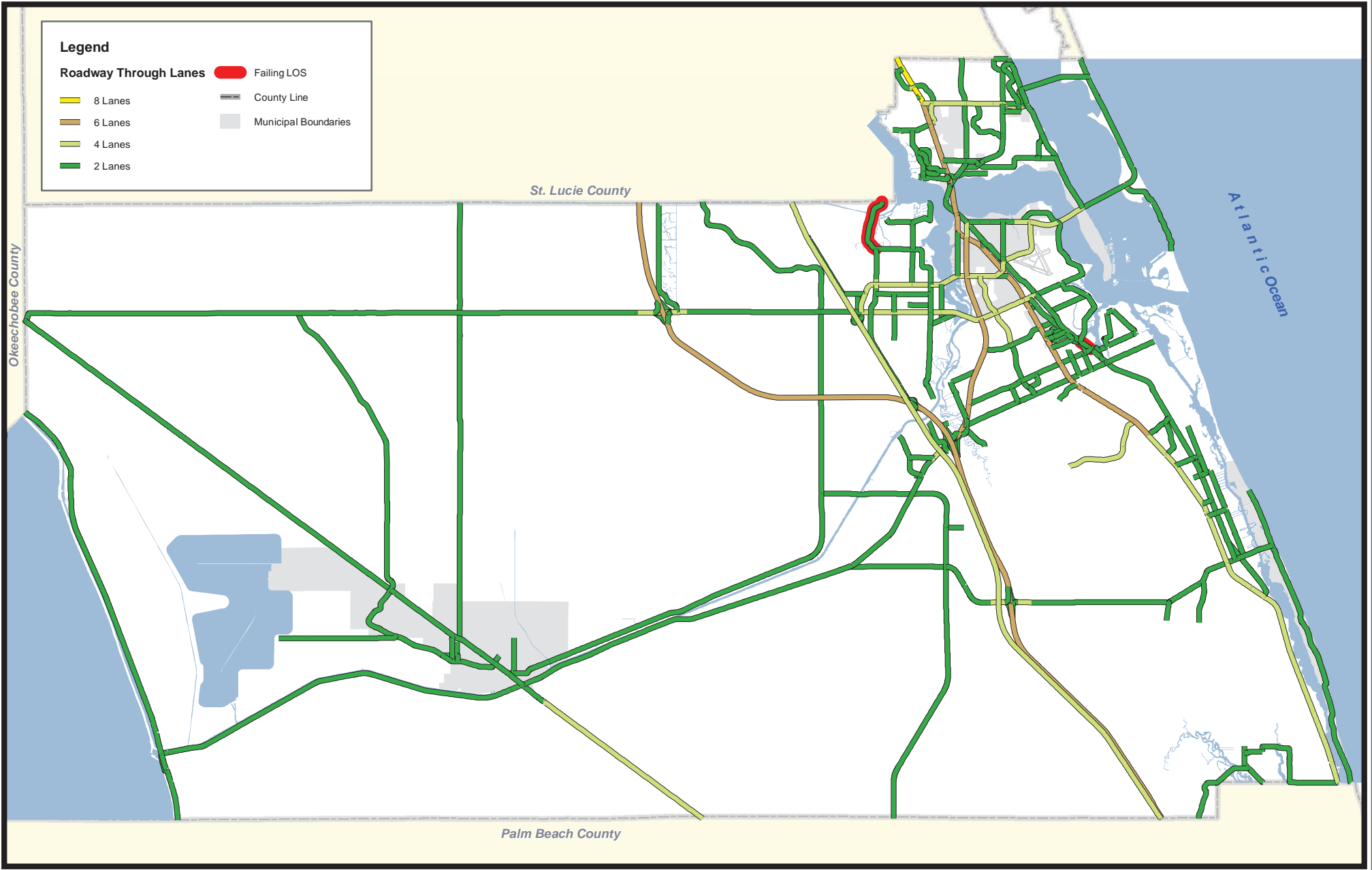
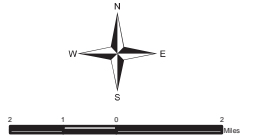




# Martin County

Draft March 24, 2021

## 2021 Transportation Map Roadway Lanes and Level of Service Figure 5-1C

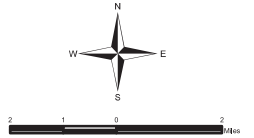




# Martin County

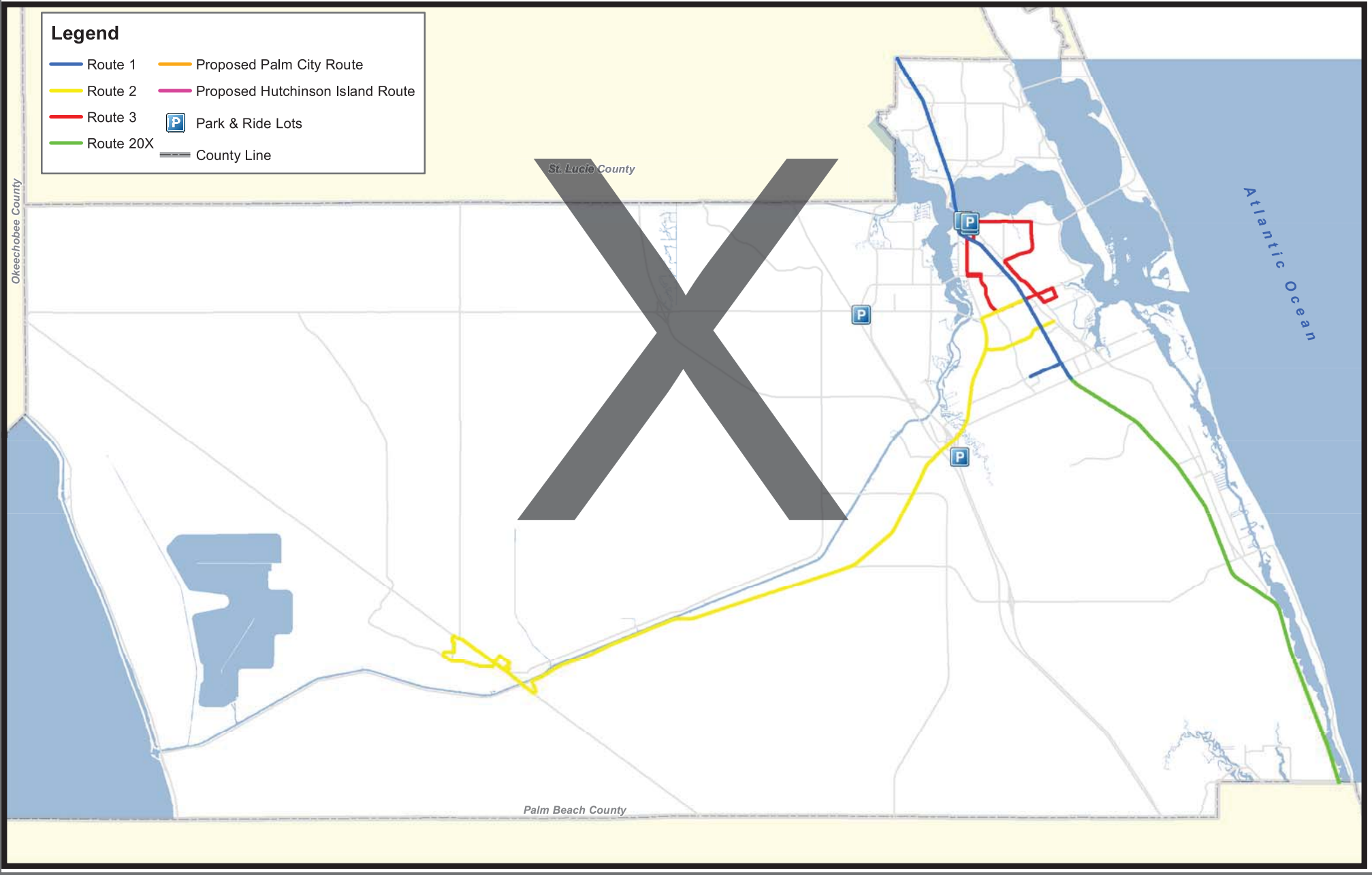
October 24, 2017

## 2017 Transportation Map Public Transportation Figure 5-3



### Legend

- Route 1
- Route 2
- Route 3
- Route 20X
- Proposed Palm City Route
- Proposed Hutchinson Island Route
- Park & Ride Lots
- County Line



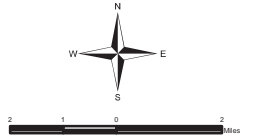




# Martin County

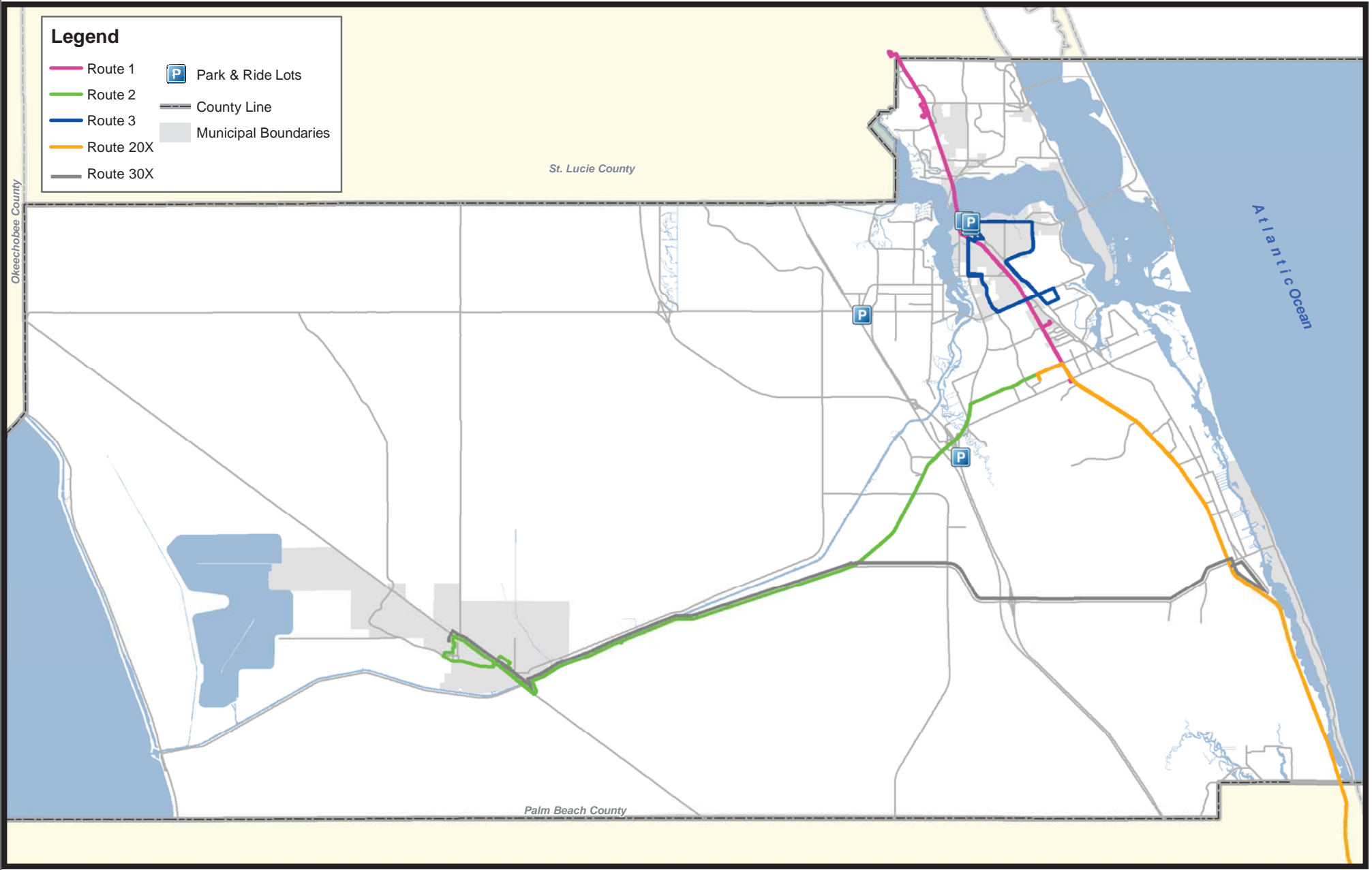
Draft March 24, 2021

## 2021 Transportation Map Public Transportation Figure 5-3



### Legend

- Route 1
- Route 2
- Route 3
- Route 20X
- Route 30X
- Park & Ride Lots
- County Line
- Municipal Boundaries

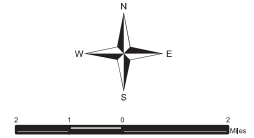




# Martin County

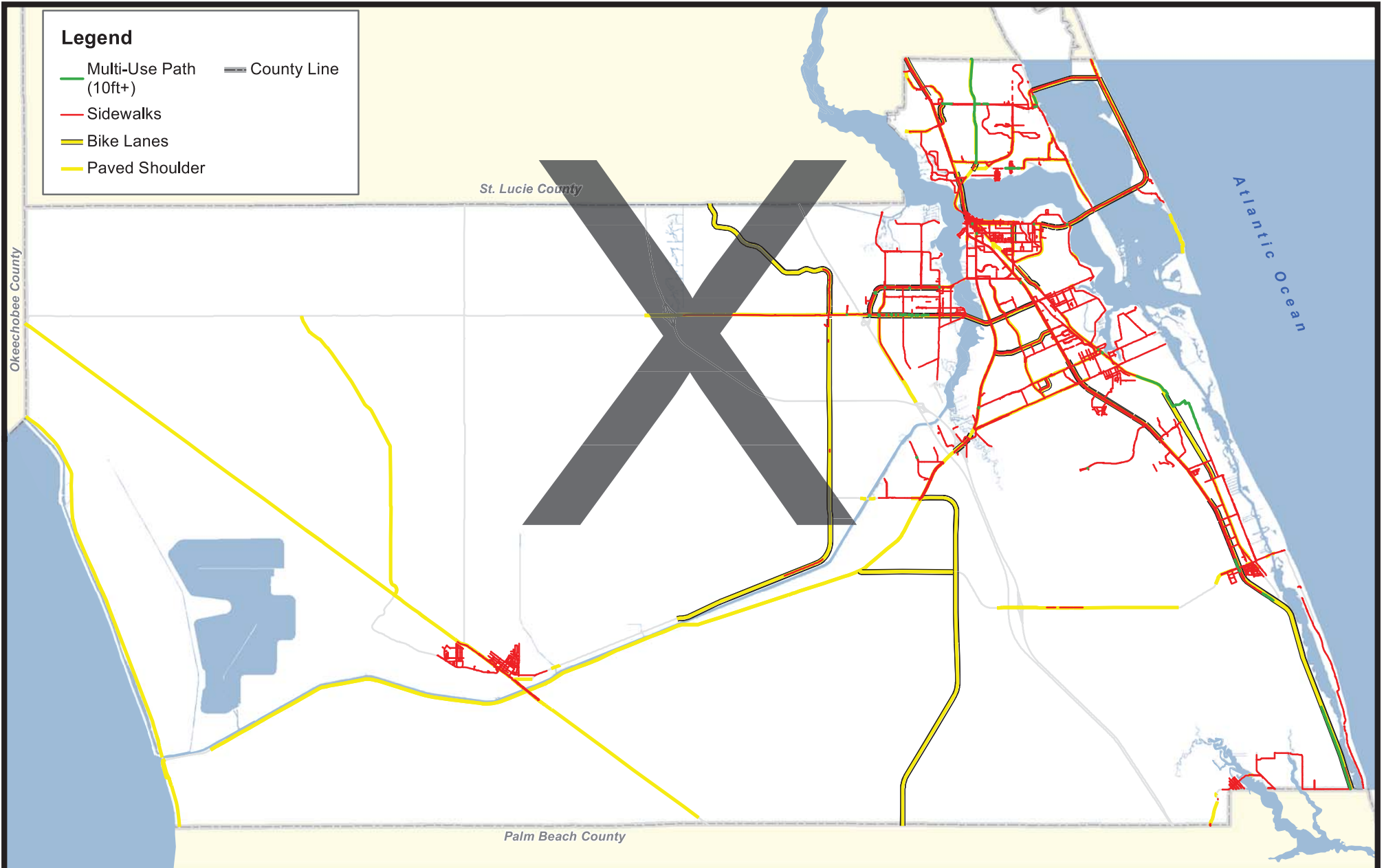
October 24, 2017

## 2017 Transportation Map Non Motorized Transportation System Figure 5-4



### Legend

- Multi-Use Path (10ft+)
- Sidewalks
- Bike Lanes
- Paved Shoulder
- County Line

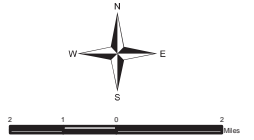




# Martin County

Draft March 24, 2021

## 2021 Transportation Map Non Motorized Transportation System Figure 5-4



### Legend

- Multi-Use Path (10ft+) — Green line
- Sidewalks — Red line
- Bike Lanes — Yellow line
- Paved Shoulder — Yellow line
- County Line — Grey dashed line
- Municipal Boundaries — Grey solid line

