



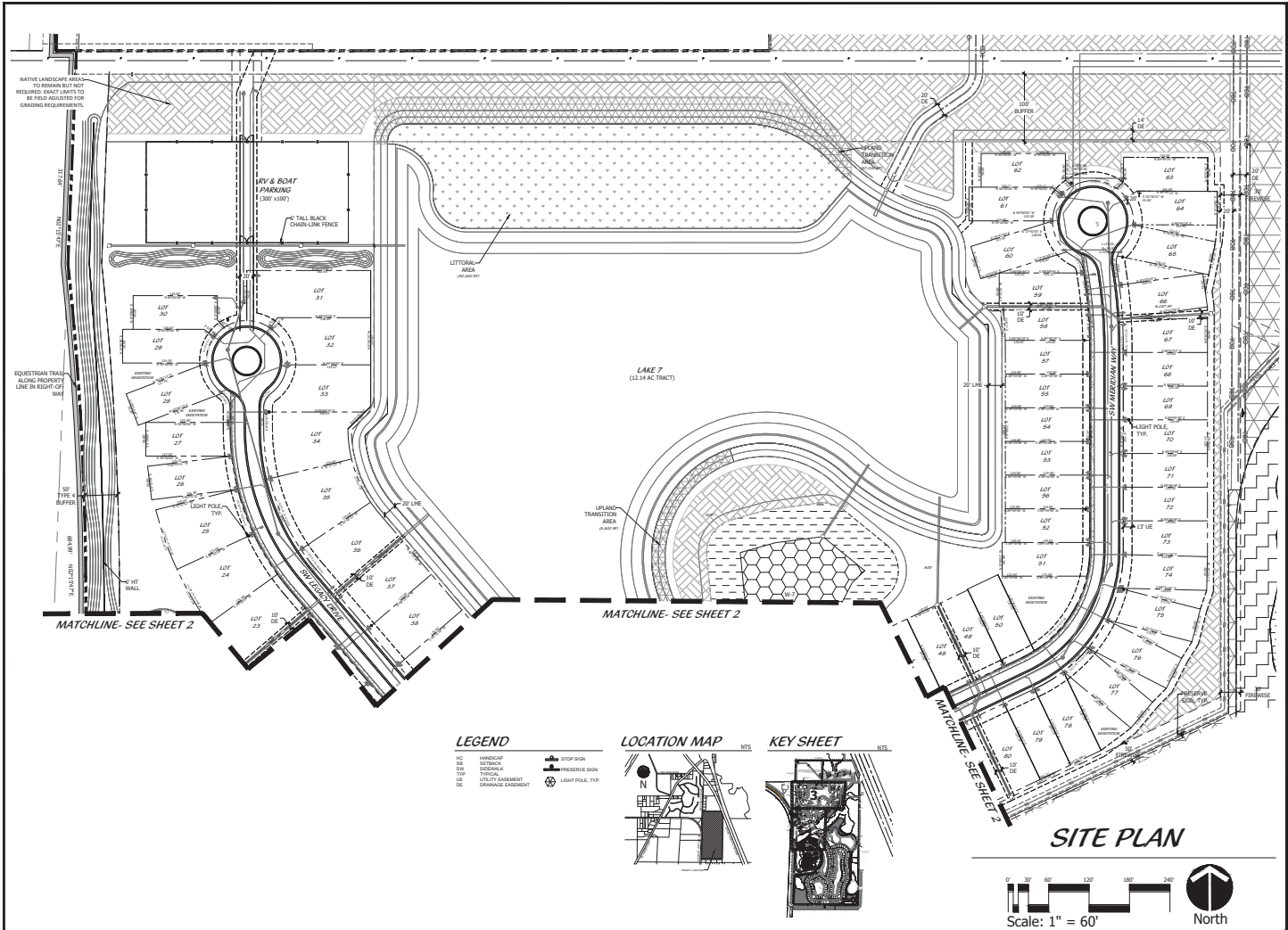
Cofleur & Hearing
 Landscape Architects
 Land Planners
 Environmental Consultants
 1934 Commerce Lane
 Suite 1
 Jupiter, Florida 33408
 561.747.6306 Fax 747.1377
 www.cofleurhearing.com
 Lic# LC-28000535

HIGHPOINTE
 PULTE GROUP
 Martin County, Florida

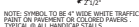
| REVISION | DATE | BY | CHKD |
|----------|----------|----|------|
| 1 | 08-15-21 | | |
| 2 | 08-15-21 | | |
| 3 | 08-15-21 | | |
| 4 | 08-15-21 | | |
| 5 | 08-15-21 | | |
| 6 | 08-15-21 | | |
| 7 | 08-15-21 | | |
| 8 | 08-15-21 | | |
| 9 | 08-15-21 | | |
| 10 | 08-15-21 | | |

PHASE 2 OF 5

8/15/21



| | |
|------------|----------|
| DESIGNED | LCM |
| DRAWN | LCM |
| APPROVED | LCM |
| JOB NUMBER | 19-0127 |
| DATE | 10-20-20 |
| REVISIONS | 01-23-21 |
| | 08-18-21 |
| | 09-08-21 |



D CURB DETAIL

6'0" STUCCO BAND

6"0"

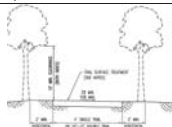
2'0" HEIGHT

2'0" DEPTH

CONCRETE COLUMN

SEE GRADING PLANS FOR ELEVATION

EQUESTRIAN TRAIL



- NOTES FOR AGGRESSIVE TRAIL:**
1. SURFACES ARE NATURAL
 2. TREES AND SHRUBS ENCROACHMENT ARE LEFT NATURAL
 3. EROSION IS LEFT NATURAL BUT SHOULD NOT INTERFERE WITH TRAIL UTILIZATION
 4. MISSING AND/OR DAMAGED SIGNS ARE REPLACED/REPAIRED
 5. LITTER IS COLLECTED AT LEAST TWICE MONTHLY; BROKEN GLASS IS REMOVED
 6. NO MOTORIZED VEHICLES ALLOWED ON TRAIL

The diagram illustrates the cross-section of a bridge deck with various dimensions and load positions. Key features include:

- Deck Widths:** The top width is 27' at the centerline. The bottom width is 12'.
- Load Positions:** A central point load is labeled "P.O.B. = 11.50". Two side loads are labeled "Qd = 12.50".
- Dimensions:** Horizontal dimensions from the centerline to the edges are 12' and 15'. Vertical dimensions include 70in (55.00) and 70in (15.00).
- Labels:** "POINT CENTERLINE" is indicated at the top. "V.M.E.S." is labeled at the bottom center.

TYPICAL LAKE CROSS SECTION W/ LITTORAL PLANTINGS

TYPICAL LAKE CROSS SECTION W/ LITTORAL PLANTINGS AT EXISTING UPLAND TRANSITION ZONE



SITE DETAILS



HIGHPOINTE
PULTE GROUP
Martin County, Florida

| | |
|------------|----------|
| DESIGNED | LAH |
| DRAWN | LAH |
| APPROVED | DTS |
| JOB NUMBER | 19-0127 |
| DATE | 10-23-20 |
| REVISIONS | 03-23-21 |
| | 06-16-21 |
| | 09-03-21 |