



Development Review Projects

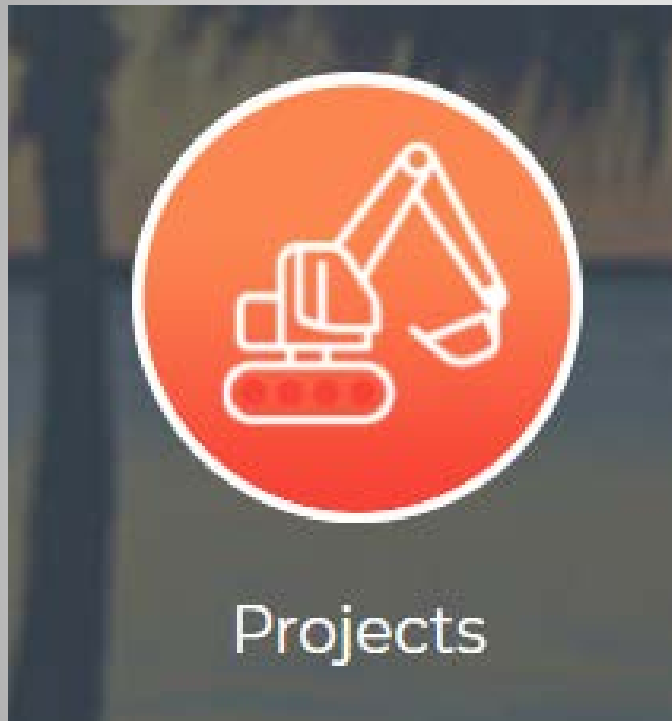
Directory Jobs News Request for Service Employees



Martin County Florida
Your County. Your Community.



HOME RESIDENTS ▾ BUSINESS ▾ DEPARTMENTS ▾ THINGS TO DO ▾ I WANT TO SERVICES TRANSPARENCY ▾ DOCUMENTS ▾



PROPOSED DEVELOPMENT PROJECTS

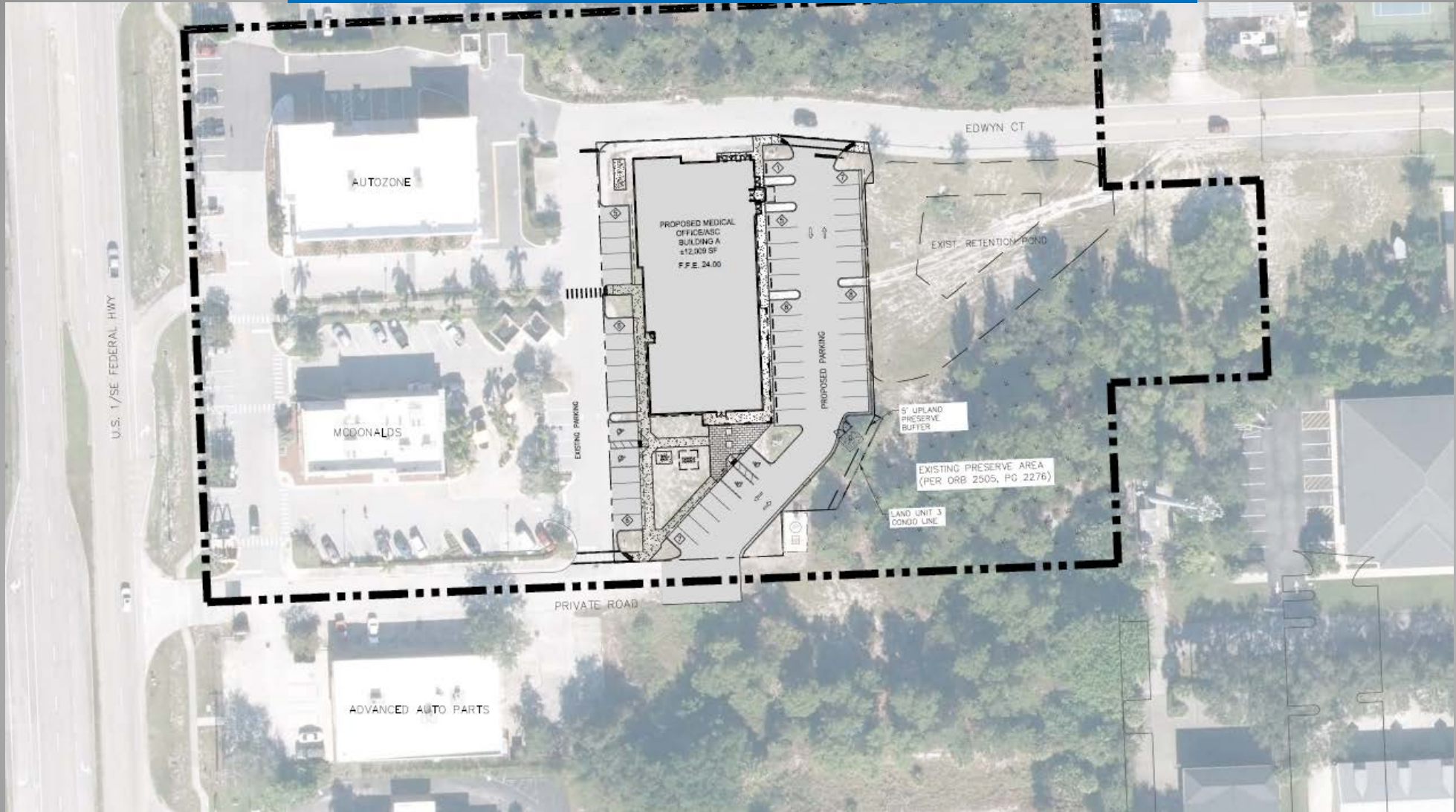
Private developer projects found in the Proposed Developments map include residential, commercial and industrial applications which are currently under review or have been approved.



SEARCH PROPOSED DEVELOPMENT PROJECTS



HOBE SOUND AMBULATORY SURGERY CENTER REVISED MINOR MASTER PLAN



OPEN SPACE (20% MIN)	10,768	0.25	45%
IMPERVIOUS AREA			
BUILDING COVERAGE (40% MAX)	2,500	0.06	10%
ASPHALT	8,410	0.19	35%
CONCRETE			
FPLED			
RAVER			
TOTAL			
PERCENT			
W/CRD			

Proposed Hobe Sound Brewery

S.E. BRIDGE ROAD



CONCEPTUAL PLAN

S.E. BRIDGE ROAD

Hobe Sound Brewery From PreApp



SITE

- 9126 S
- TOTAL SF
- PROPOSE
- ZONING
- LAND USE
- BUILDING
- GATHERI
- VEHICUL
- OTHER PA
- OPEN SP
- CALCULA
- PERVIOU
- OPEN SP
- IMPERVH
- BUILDING
- ASPHALI
- CONCRET
- PAVERS
- TOTAL
- PARKING
- MICROBP

EXISTING FPL
ELEVATED
TRANSFORMER
TO REMAIN