

MARTIN COUNTY ►
PUBLICWORKS
@WORK

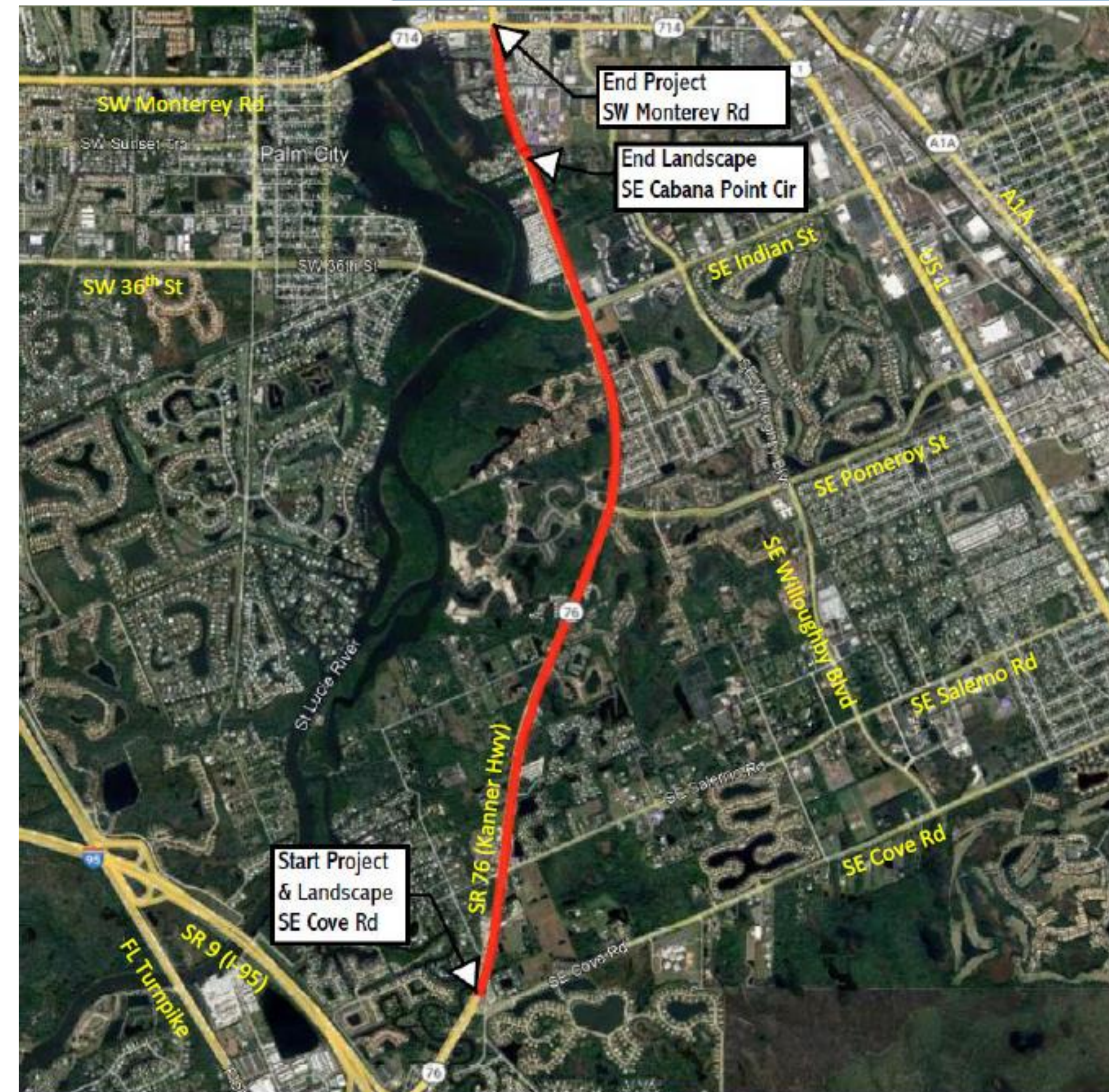
OCTOBER 19, 2021

FDOT KANNER HIGHWAY (SR-76)
LANDSCAPING PROJECT- COVE TO
MONTEREY
FM# 446033-1



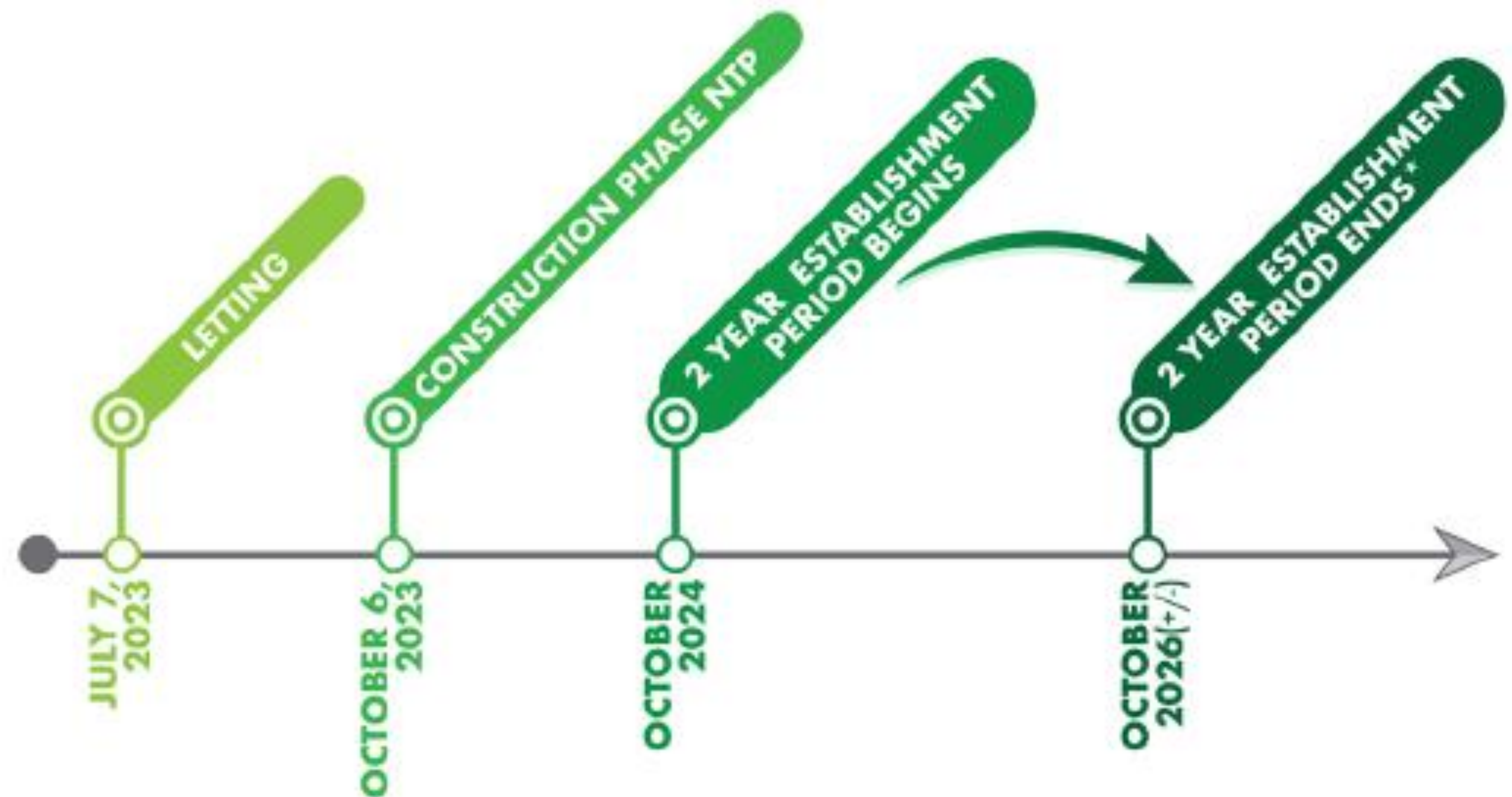
PROJECT INFORMATION

- ▶ FDOT landscaping project planned for Kanner Hwy between SE Cove Rd and SE Monterey Rd
- ▶ September 20th - The project was presented to the Metropolitan Planning Organization (MPO)
- ▶ September 28th - The BOCC expressed support for the project
- ▶ October 1st - A letter from the Chair was sent to FDOT requesting the project be expedited



CURRENT TIMELINE AND REQUEST

- ▶ FDOT hired Coteur and Hearing to design the \$1.289 million future landscaping project.
- ▶ County may contribute funds to increase the level of aesthetic desired.
- ▶ Should contributions be authorized, FDOT will require a letter of commitment from the County and funds must be provided to FDOT prior to construction.
- ▶ The final budget will be used to determine the landscaping design elements.



***NOTE: MARTIN COUNTY TO ASSUME MAINTENANCE RESPONSIBILITIES AFTER THE ESTABLISHMENT PERIOD.**



MARTIN COUNTY
PUBLICWORKS
@WORK



OPTION- HIGH LEVEL OF AESTHETIC

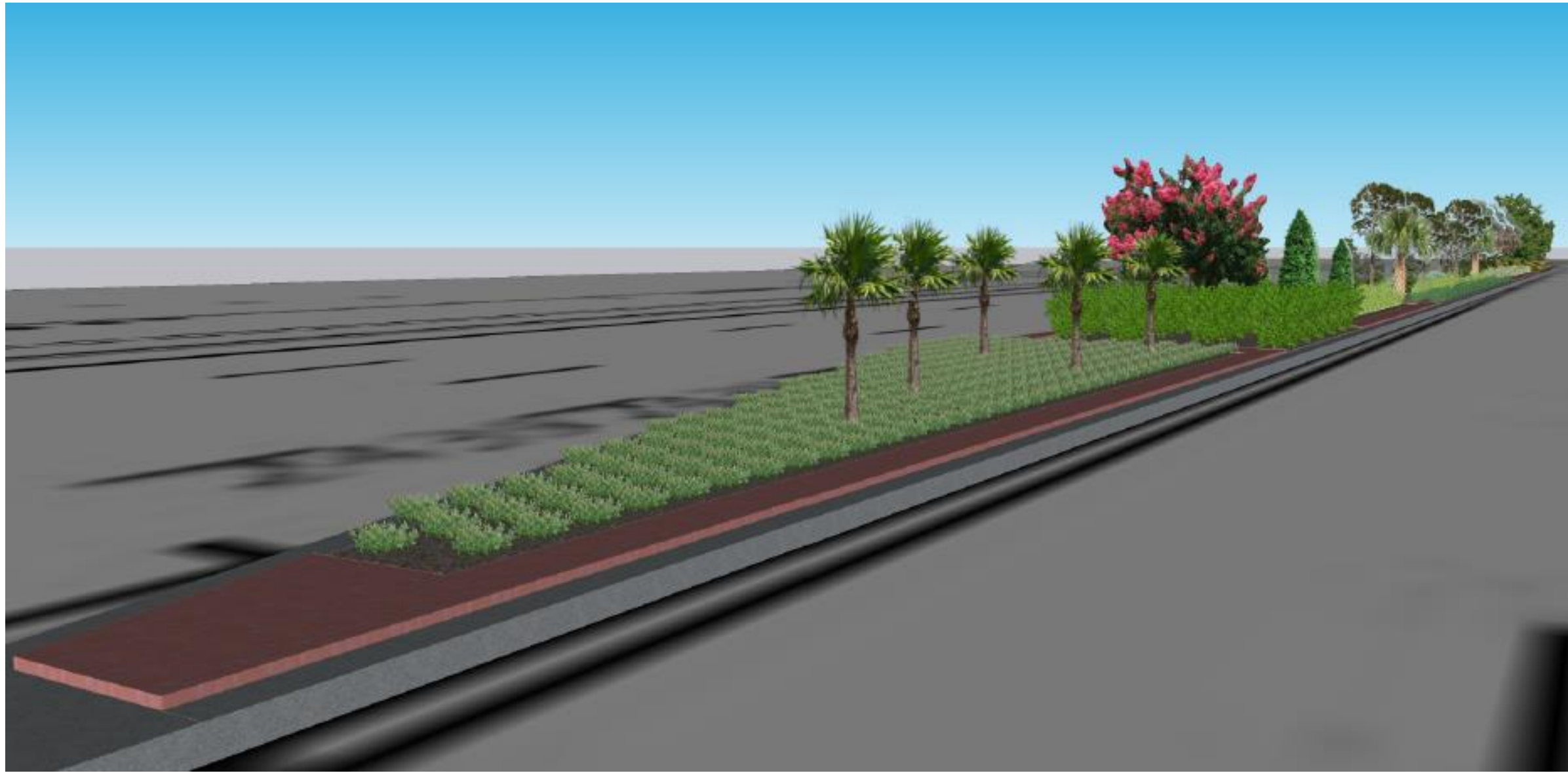
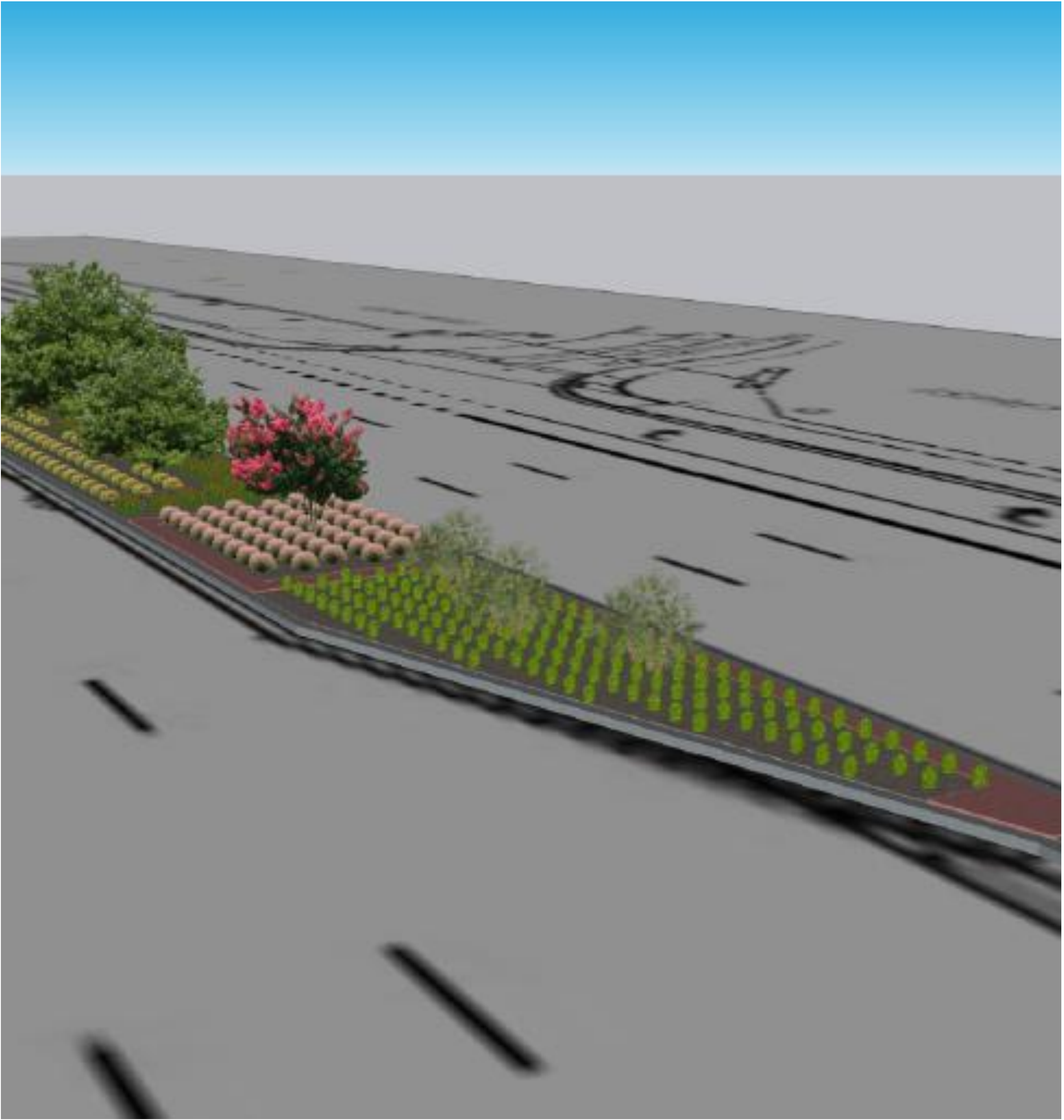
This is the option that was presented to the MPO

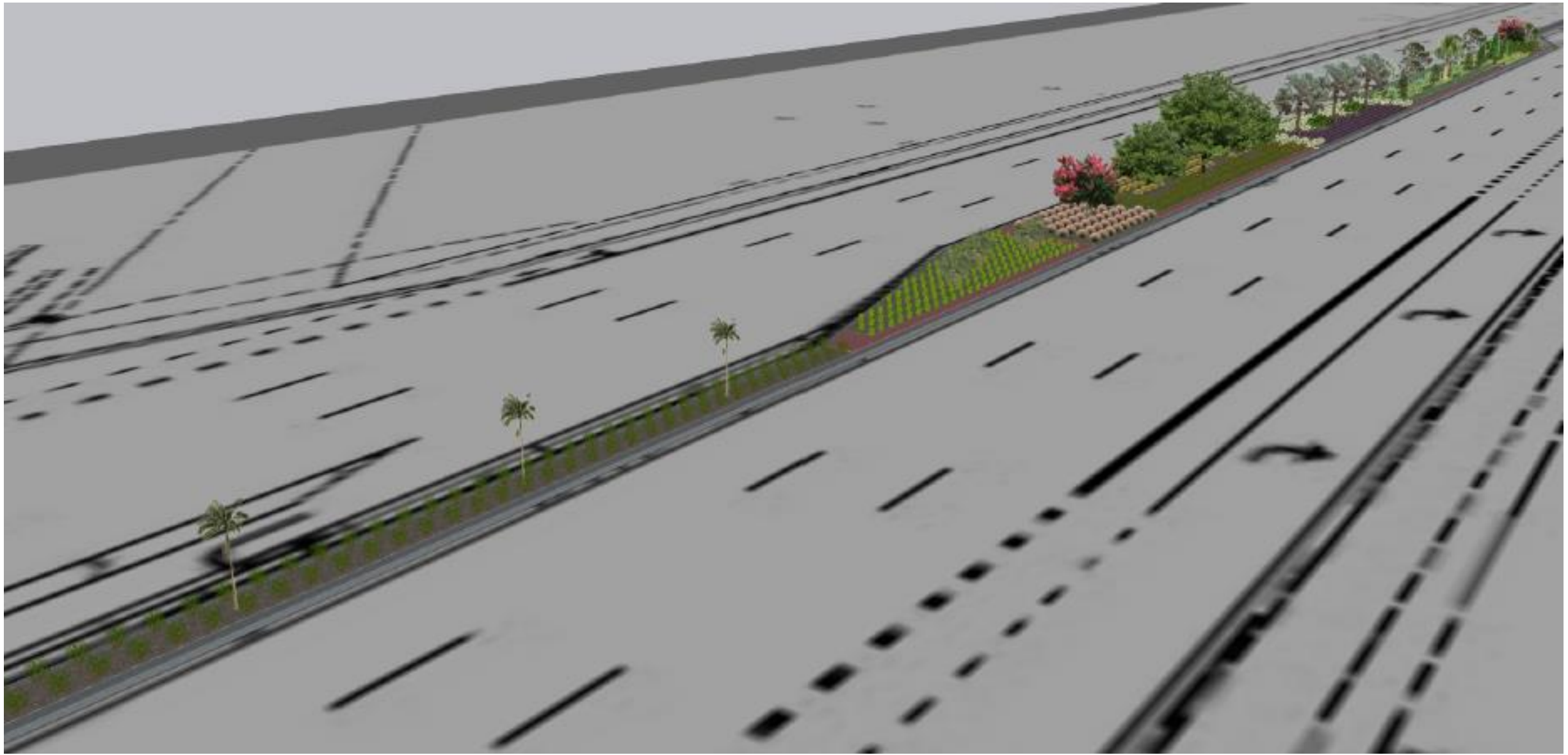
- ▶ Design repeats elements from Veterans Memorial Bridge and sections of SR76 to the south
- ▶ Medians include solid shrub plantings (no sod), decorative concrete maintenance strips, and irrigation systems
- ▶ Sound walls (2,600') include trees, shrubs and irrigation
- ▶ (4) Ponds include tree plantings only (no irrigation)
- ▶ Three irrigation systems drawing from on site FDOT ponds

\$\$\$



MARTIN COUNTY
PUBLICWORKS
@WORK







OPTION- MEDIUM LEVEL OF AESTHETIC

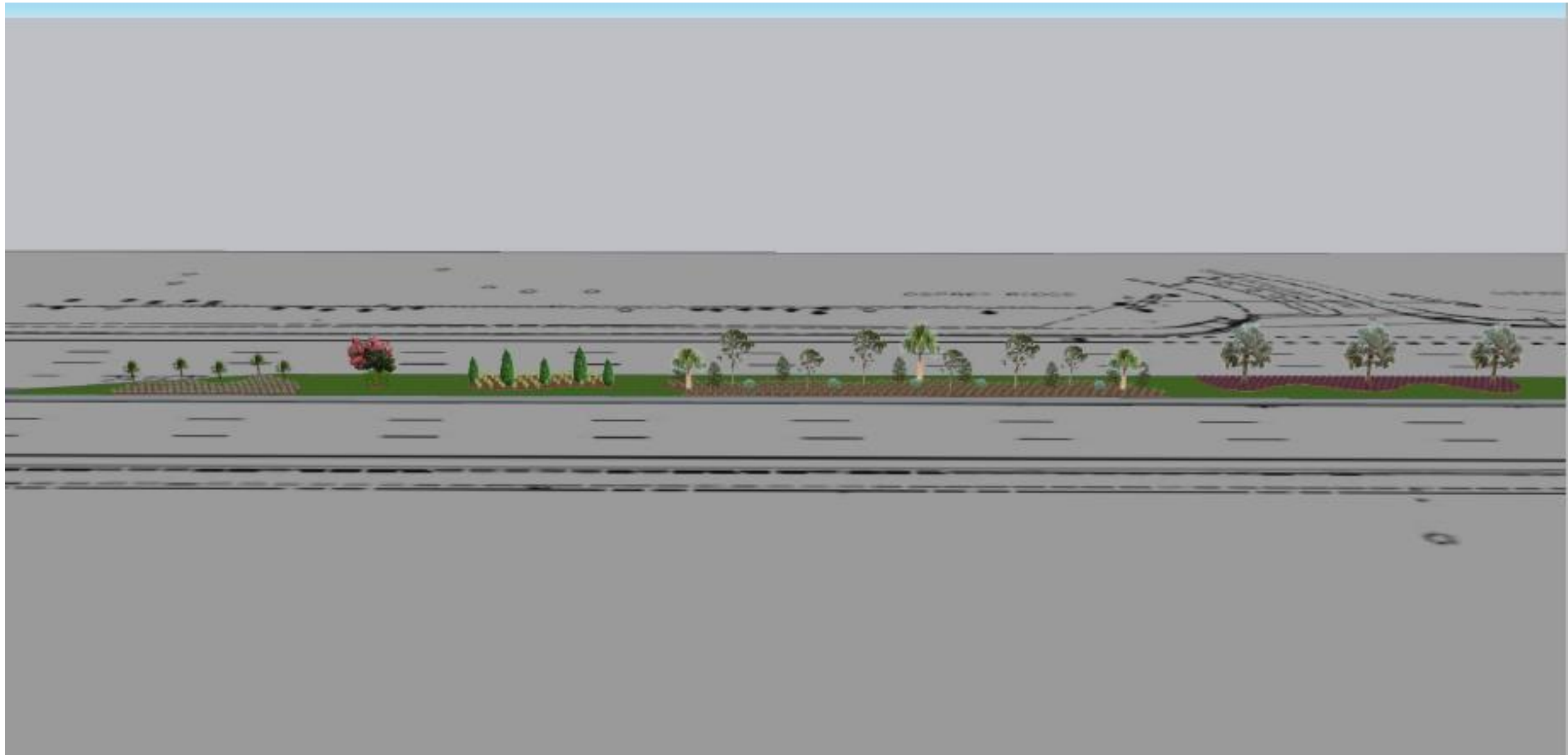
\$\$

- ▶ Reduced plant sizes, no stamped concrete maintenance strips in the median, turf in the medians between planting beds. Sound wall design and irrigation remain the same.



MARTIN COUNTY
PUBLICWORKS
@WORK







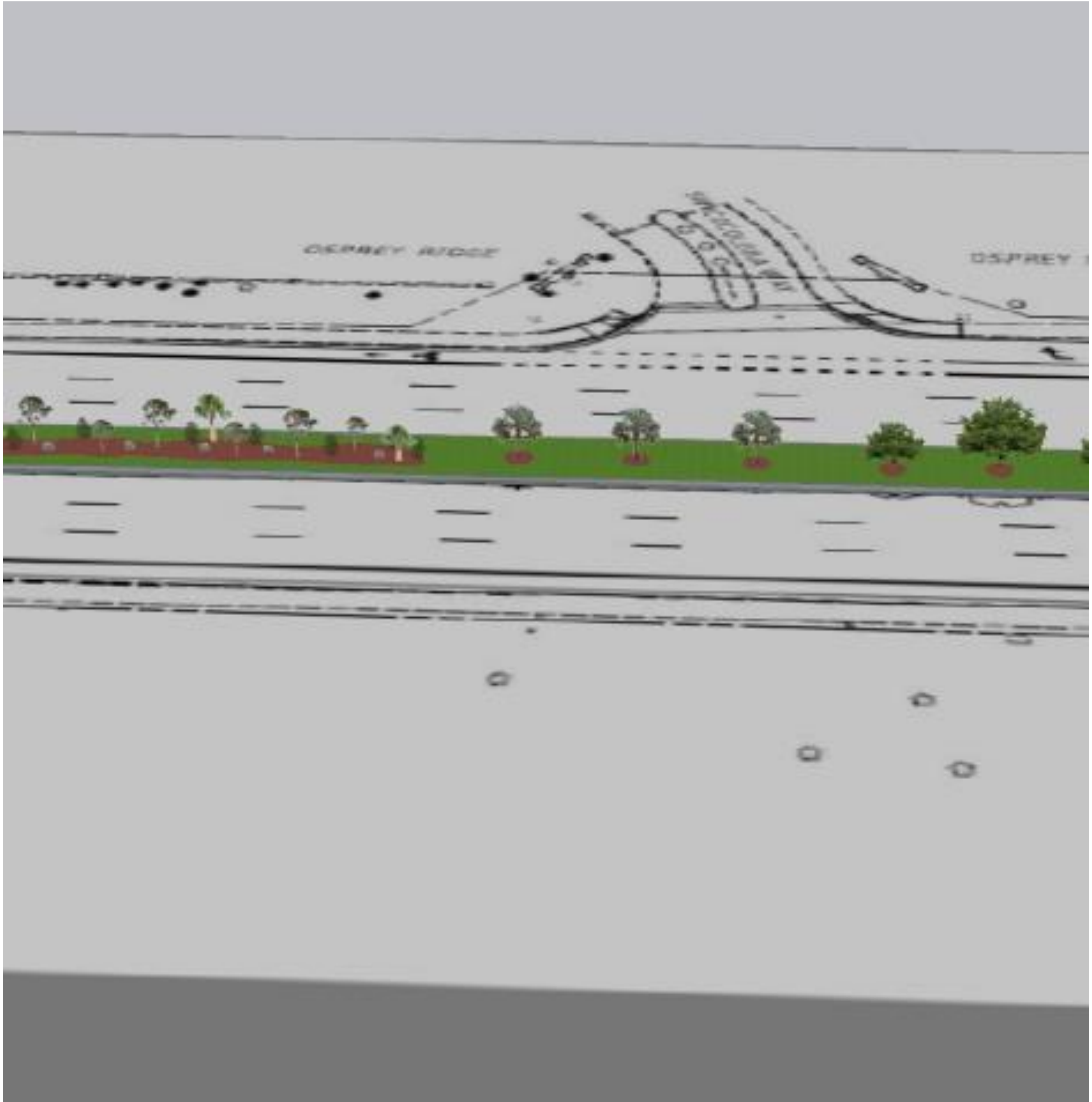
OPTION- LOW LEVEL OF AESTHETIC



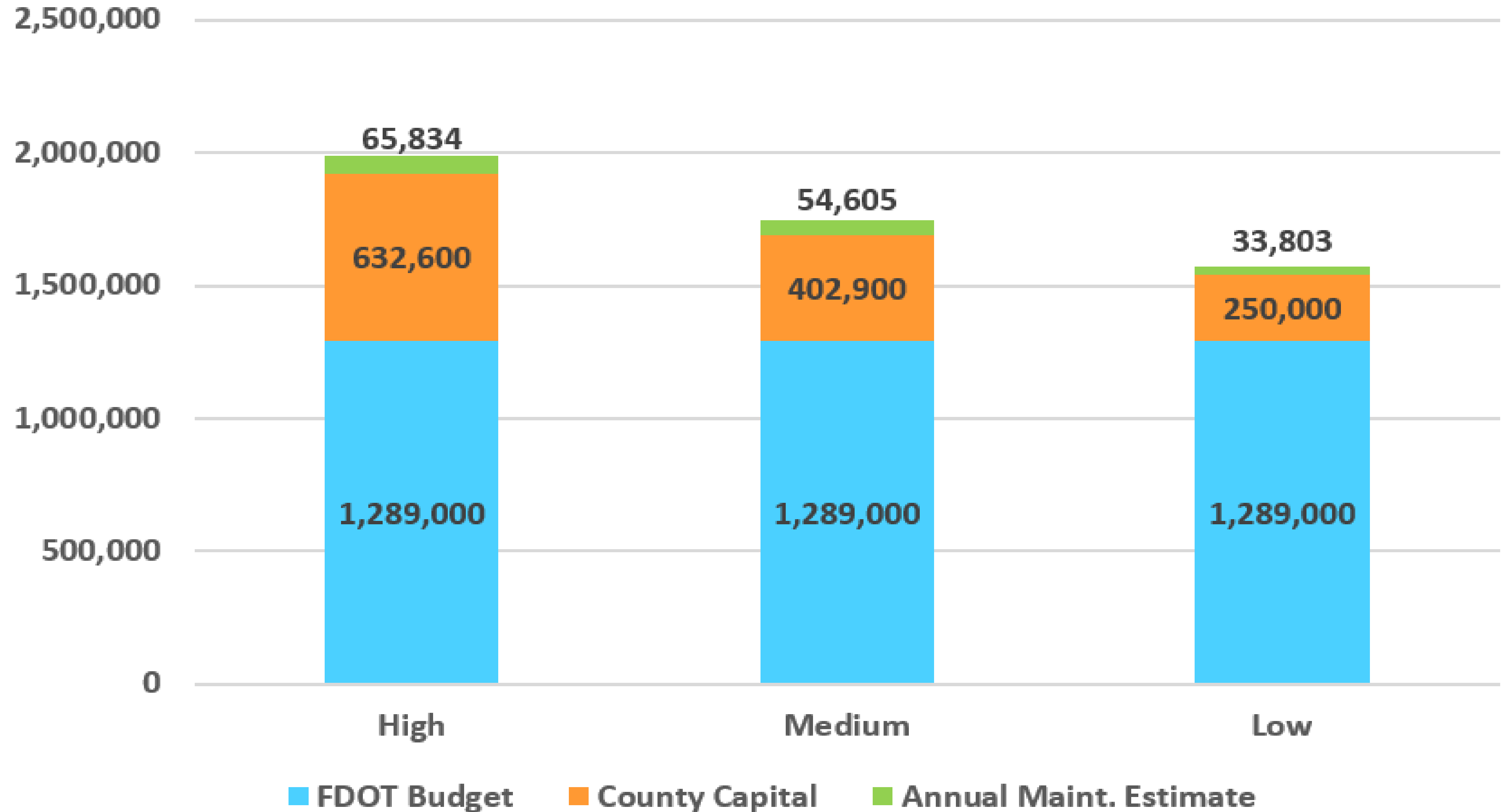
- ▶ All shrubs eliminated from medians. Medians would include trees, sod, and irrigation only, no stamped concrete maintenance strips. Sound wall and irrigation remain the same.

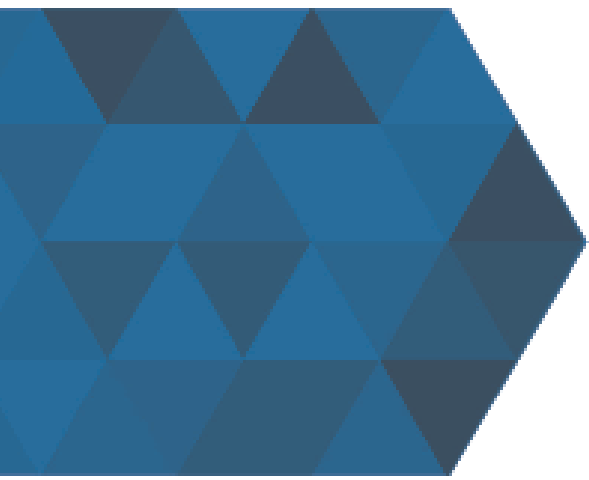






Estimated Projected Costs





FUNDING

- County contribution is required prior to letting of project.
- County maintenance will not begin until 2 years after construction and will be added to the appropriate budget.
- Enhanced landscape maintenance is typically funded by gas tax, which has been steadily decreasing due to more efficient vehicles and prevalence of remote work.
- New enhanced landscape maintenance sites will impact the Road MSTU in future budgets, which may require a super majority vote for approval.





RECOMMENDATION

- ▶ Move that the Board provide direction to staff in terms of the desired level of aesthetic and contribution amounts
- ▶ Move that the Chair execute a Letter of Commitment for the contribution amount and future maintenance to the Florida Department of Transportation

